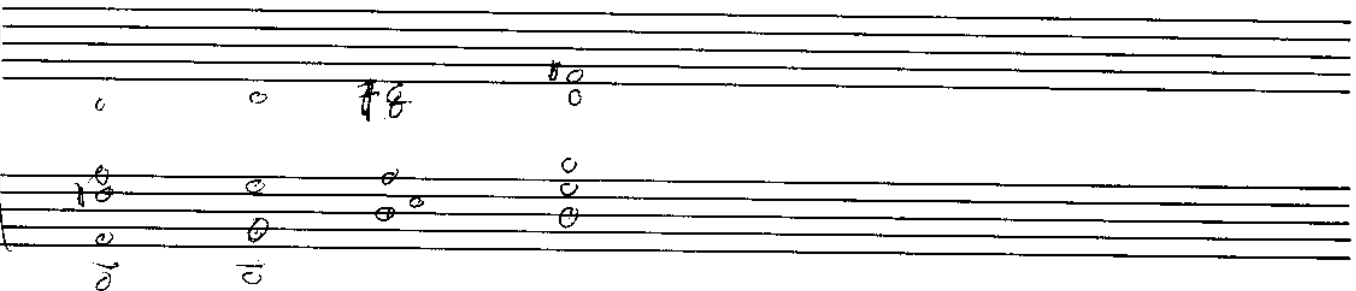
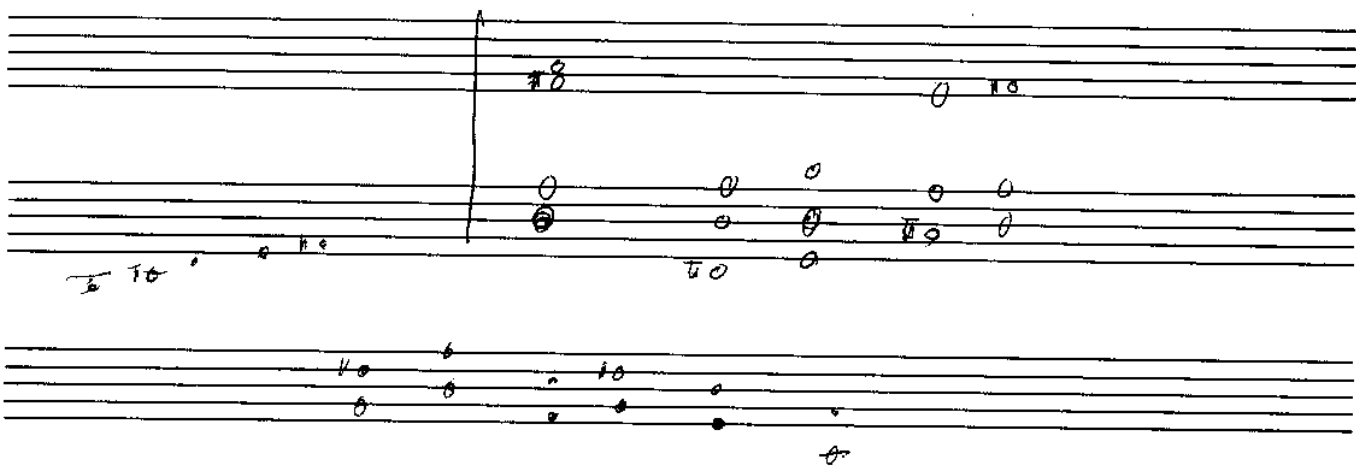
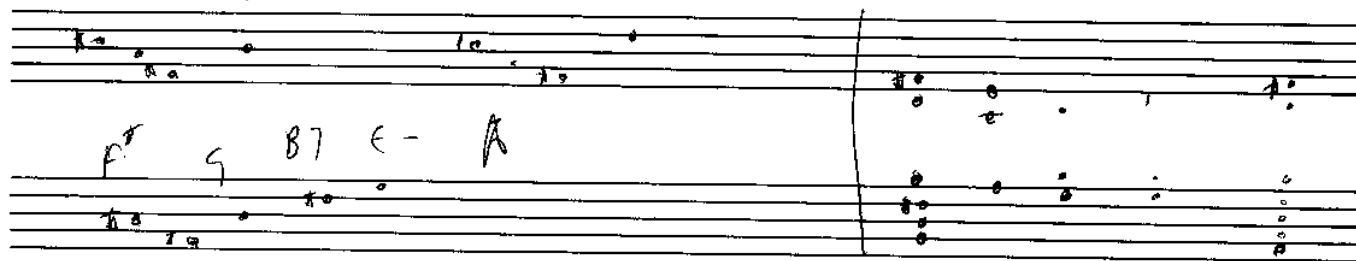


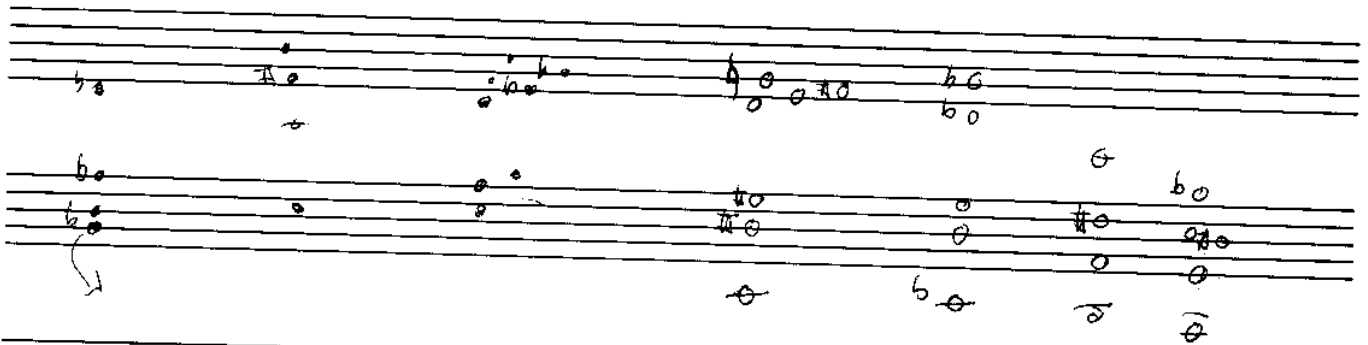
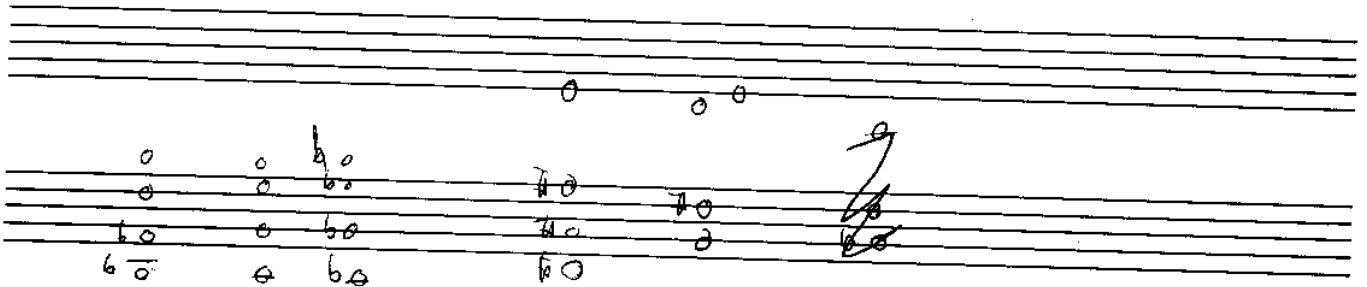
A/G G A/E A/C⁺ D Asus



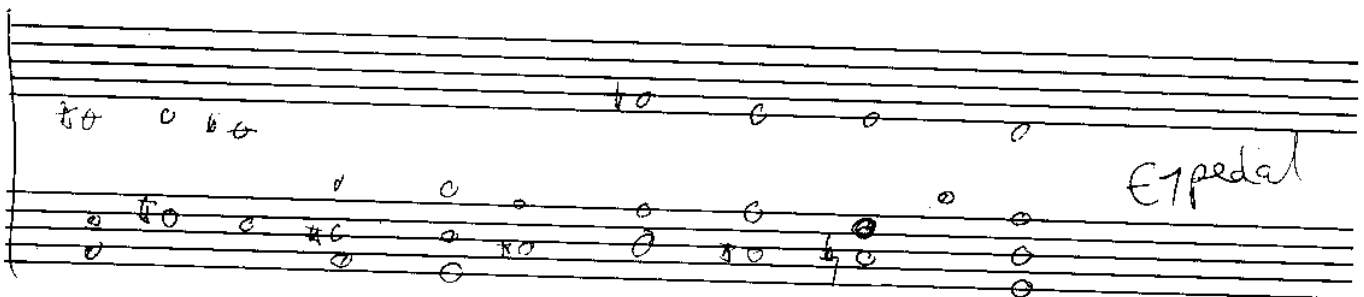
ANOTHER SONG



BEST WESTERN

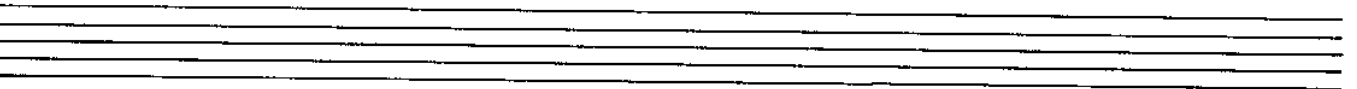
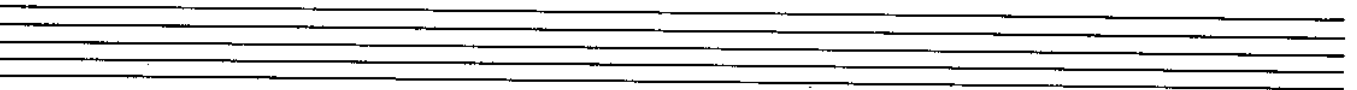
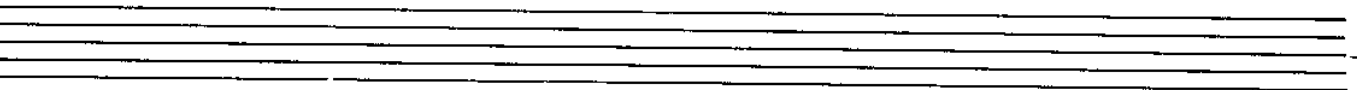
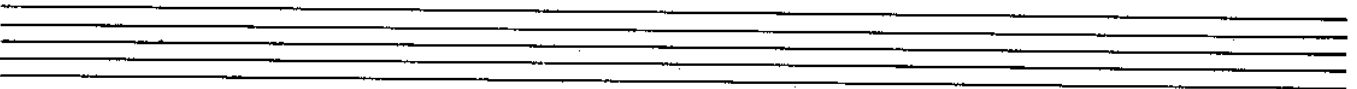
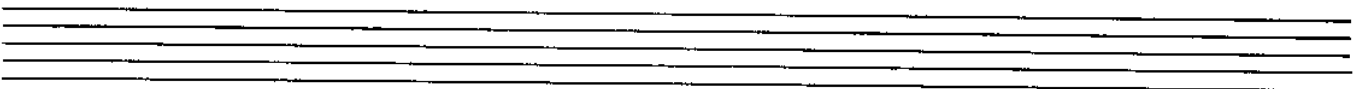
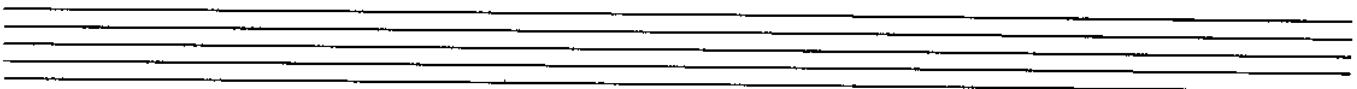
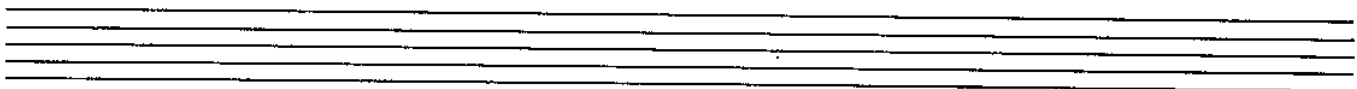
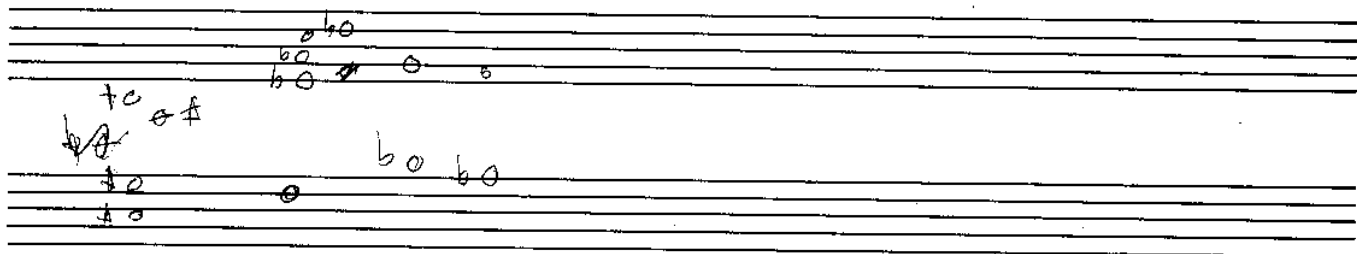
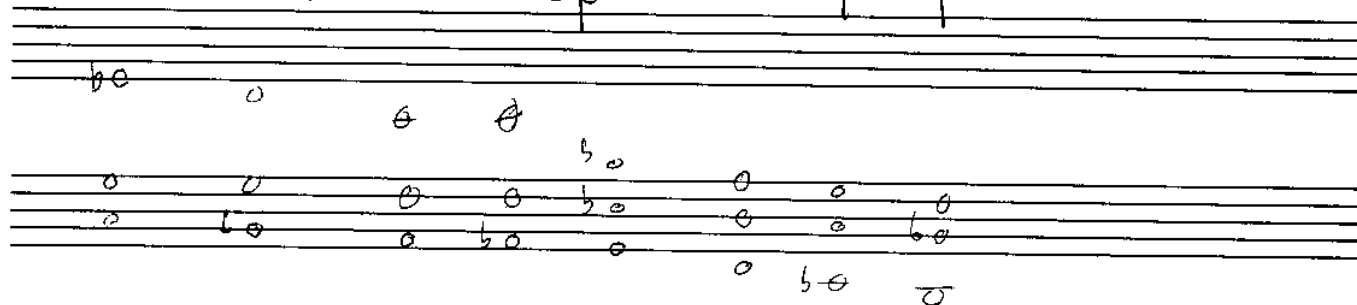


C pedal



E1 pedal

C minor open very sparse



E6 BΔ7 AΔ7 GΔ7 C6

Handwritten musical notation for the first system of chords: E6, BΔ7, AΔ7, GΔ7, C6. Each chord is represented by a staff with notes indicating the chord structure.

GΔ7/B CΔ7 DΔ7 sus DΔ7 FΔ7

Handwritten musical notation for the second system of chords: GΔ7/B, CΔ7, DΔ7 sus, DΔ7, FΔ7. Each chord is represented by a staff with notes indicating the chord structure.

Handwritten musical notation for the third system of chords: FΔ7/A, EΔ7, EΔ7/G, DΔ7, B-(b6), G-(b6), C#, DΔ7. Each chord is represented by a staff with notes indicating the chord structure.

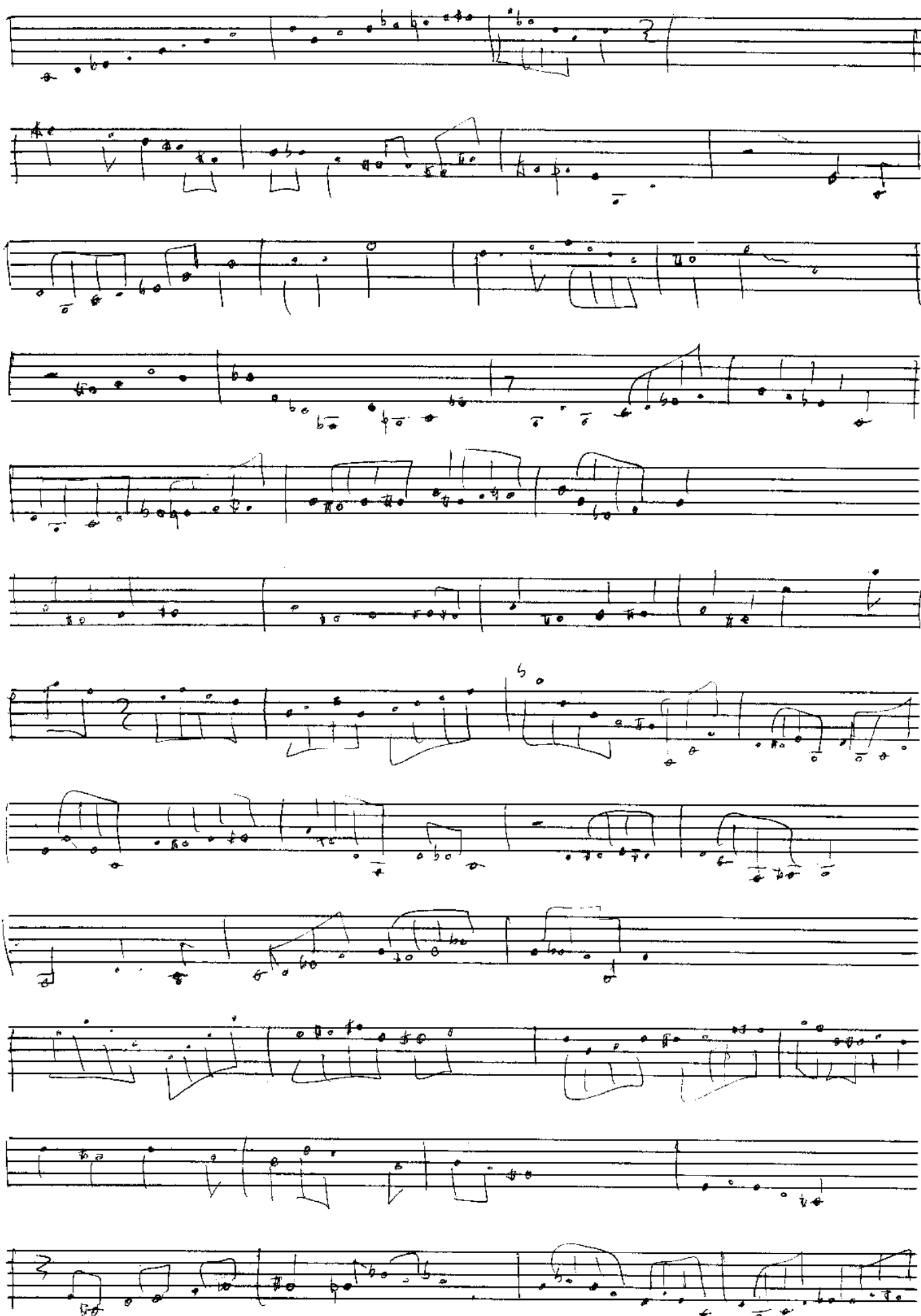
CHORD SEQUENCE

play the chord sequence
any way you

want. *drum* with drums.
rhythmically

Handwritten musical notation for a melodic line, consisting of two staves with notes and rests.

CIME HOUSE BLUES



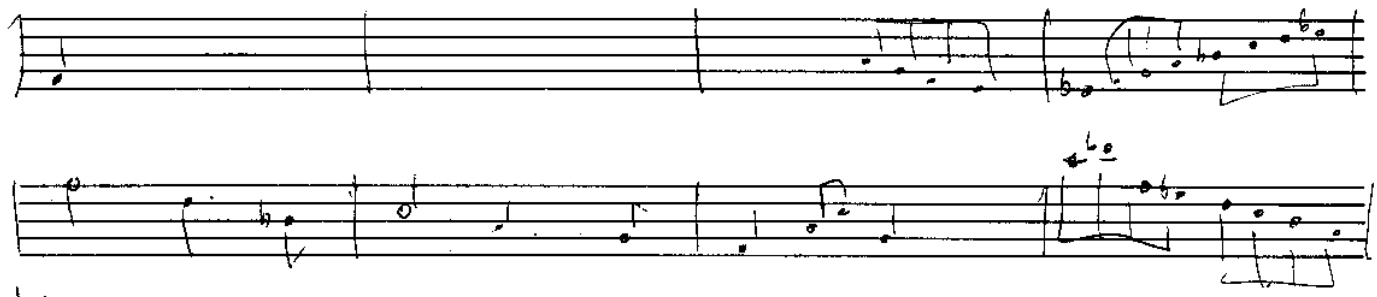
CIMETHOUSE BLUES

A handwritten musical score for a piece titled "CIMETHOUSE BLUES". The score is written on 12 staves, each consisting of five lines. The notation includes various musical symbols such as notes, rests, and bar lines. The first staff begins with a treble clef and a key signature of one flat (B-flat). The music is written in a style that suggests a blues or jazz genre. The notation includes various note values, including eighth and sixteenth notes, as well as rests. There are also some handwritten annotations, such as "31 32 1" and "806", which may refer to specific measures or sections of the piece. The score is written in black ink on a white background.

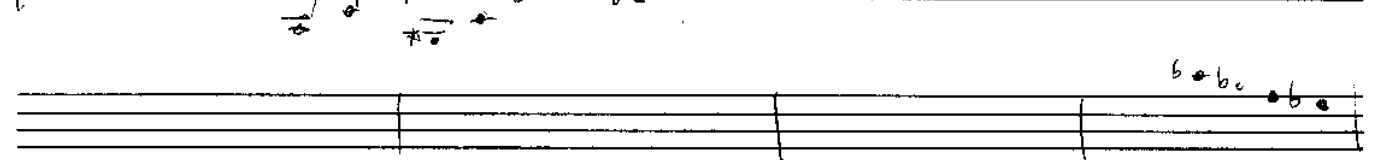
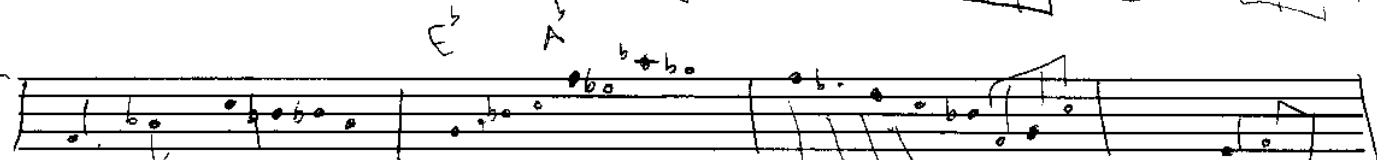
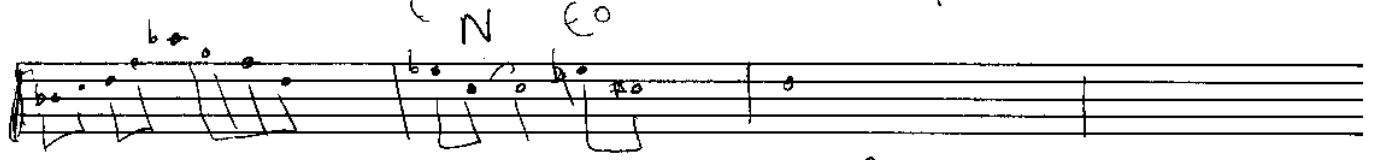
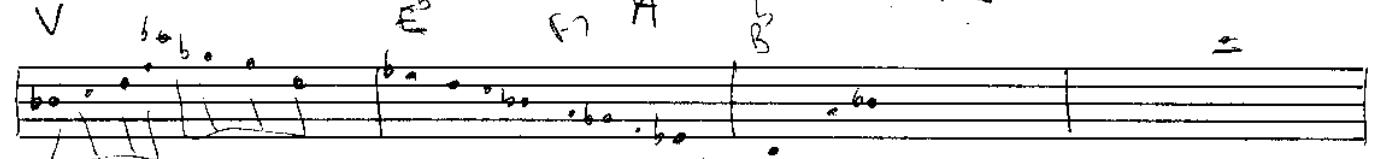
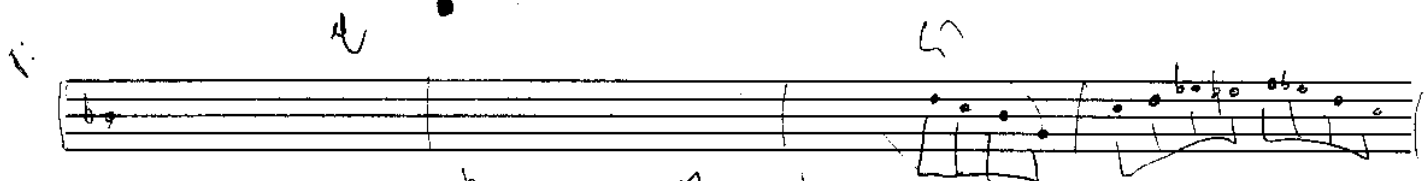
Coltrane oleo

A handwritten musical score for a piece titled "Coltrane oleo". The score is written on ten staves. The notation includes various musical symbols such as notes, rests, and accidentals (sharps, flats, and naturals). There are several annotations in the left margin: "top" next to the third staff, "bridge" next to the fifth staff, and "7" above the sixth staff. The score features a variety of musical styles, including a wavy line on the eighth staff and a series of notes on the ninth staff. The handwriting is in black ink on a white background.

coltrane. oleo



Bridge



OTTISV 2003 S
A add 9 A-11

E^b - COME BACK

Handwritten musical notation for the first system, featuring a treble and bass staff with chords and notes.

F^b D7 / A[#] C[#] / F[#] E^b - / F D A7 E / A (B-)

Handwritten musical notation for the second system, featuring a treble and bass staff with chords and notes.

B-13 F[#] sus G-11 G-11 (C A7 sus)

Handwritten musical notation for the third system, featuring a treble and bass staff with chords and notes.

C D7 sus B A7 S E D7 F[#] sus (add 3)

Handwritten musical notation for the fourth system, featuring a treble and bass staff with chords and notes.

A^b sus (add 3) F[#] sus A^b - A^b - / F[#] D D \$ al \$

Handwritten musical notation for the fifth system, featuring a treble and bass staff with chords and notes.

SOLO

BA7 AA7 C= DA7 F[#] -

Handwritten musical notation for the sixth system, featuring a treble and bass staff with chords and notes.

BB7 AA7 F[#] - DA7 A^b - F[#] sus

Handwritten musical notation for the seventh system, featuring a treble and bass staff with chords and notes.

COME BACK

Back to
chorus at fire

A

DANCER (JUNGLE BEAT)

Handwritten musical notation for section A, measures 1-4. The notation is on a grand staff (treble and bass clefs). Measure 1 has a whole note chord in the bass clef (F, A, C) and a whole note chord in the treble clef (D, F, A). Measure 2 has a whole note chord in the bass clef (F, A, C) and a whole note chord in the treble clef (D, F, A). Measure 3 has a whole note chord in the bass clef (F, A, C) and a whole note chord in the treble clef (D, F, A). Measure 4 has a whole note chord in the bass clef (F, A, C) and a whole note chord in the treble clef (D, F, A). The text "fill Q" is written above the staff in measure 4.

B

F#sus

DD7

F#sus

A^b-

E69

4X

Handwritten musical notation for section B, measures 1-4. The notation is on a grand staff. Measure 1 has a whole note chord in the bass clef (F, A, C) and a whole note chord in the treble clef (D, F, A). Measure 2 has a whole note chord in the bass clef (F, A, C) and a whole note chord in the treble clef (D, F, A). Measure 3 has a whole note chord in the bass clef (F, A, C) and a whole note chord in the treble clef (D, F, A). Measure 4 has a whole note chord in the bass clef (F, A, C) and a whole note chord in the treble clef (D, F, A). The text "fill Q" is written above the staff in measure 4.

A section

fill Q

B

F#sus

DD7

F#sus

A^b-

E69

4X

Handwritten musical notation for section B, measures 1-4. The notation is on a grand staff. Measure 1 has a whole note chord in the bass clef (F, A, C) and a whole note chord in the treble clef (D, F, A). Measure 2 has a whole note chord in the bass clef (F, A, C) and a whole note chord in the treble clef (D, F, A). Measure 3 has a whole note chord in the bass clef (F, A, C) and a whole note chord in the treble clef (D, F, A). Measure 4 has a whole note chord in the bass clef (F, A, C) and a whole note chord in the treble clef (D, F, A). The text "fill Q" is written above the staff in measure 4.

C

C[#]-u

E

A^b- / f[#]

F[#]

Handwritten musical notation for section C, measures 1-4. The notation is on a grand staff. Measure 1 has a whole note chord in the bass clef (F, A, C) and a whole note chord in the treble clef (D, F, A). Measure 2 has a whole note chord in the bass clef (F, A, C) and a whole note chord in the treble clef (D, F, A). Measure 3 has a whole note chord in the bass clef (F, A, C) and a whole note chord in the treble clef (D, F, A). Measure 4 has a whole note chord in the bass clef (F, A, C) and a whole note chord in the treble clef (D, F, A). The text "fill Q" is written above the staff in measure 4.

D. \$

Handwritten musical notation for section C, measures 1-4. The notation is on a grand staff. Measure 1 has a whole note chord in the bass clef (F, A, C) and a whole note chord in the treble clef (D, F, A). Measure 2 has a whole note chord in the bass clef (F, A, C) and a whole note chord in the treble clef (D, F, A). Measure 3 has a whole note chord in the bass clef (F, A, C) and a whole note chord in the treble clef (D, F, A). Measure 4 has a whole note chord in the bass clef (F, A, C) and a whole note chord in the treble clef (D, F, A). The text "fill Q" is written above the staff in measure 4.

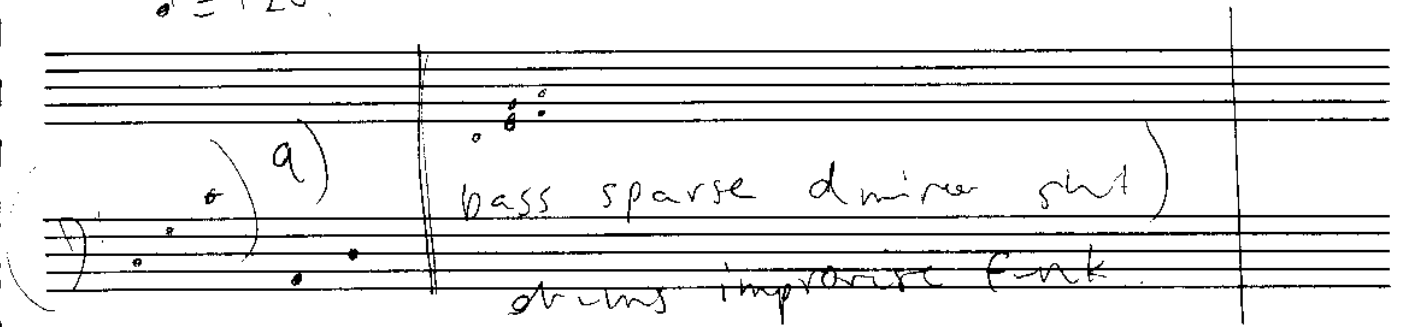
DIRTY HARRY is a simple tune

$d = 120?$

(a)

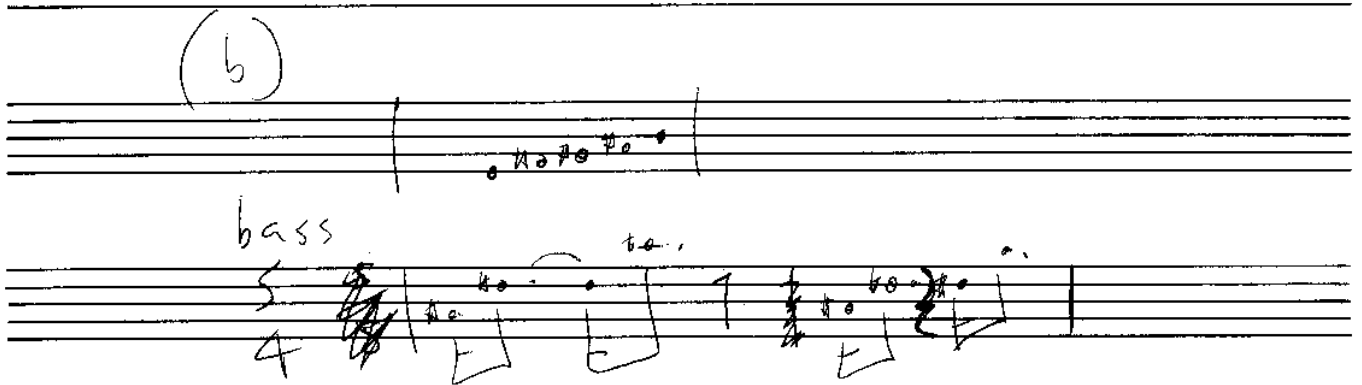
bass sparse & minor 9th

drums improvise funk

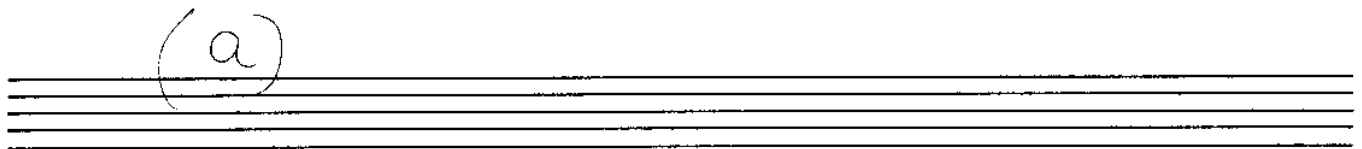


(b)

bass



(a)

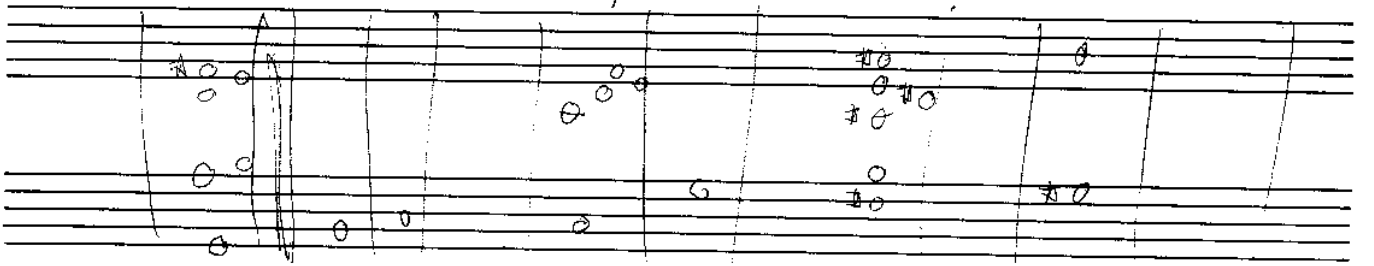
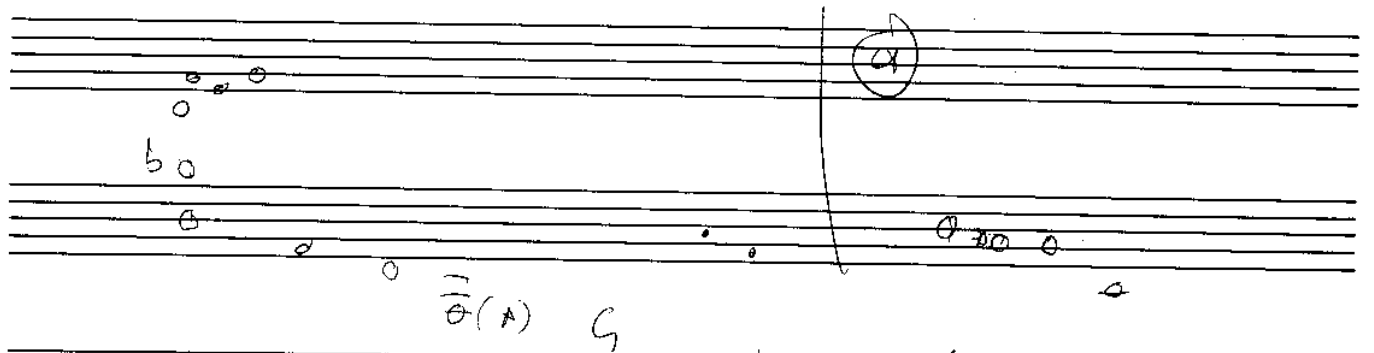
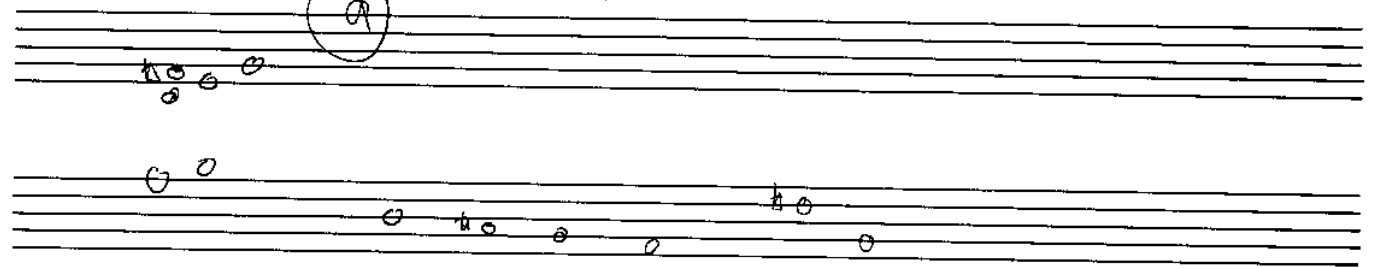


(c)

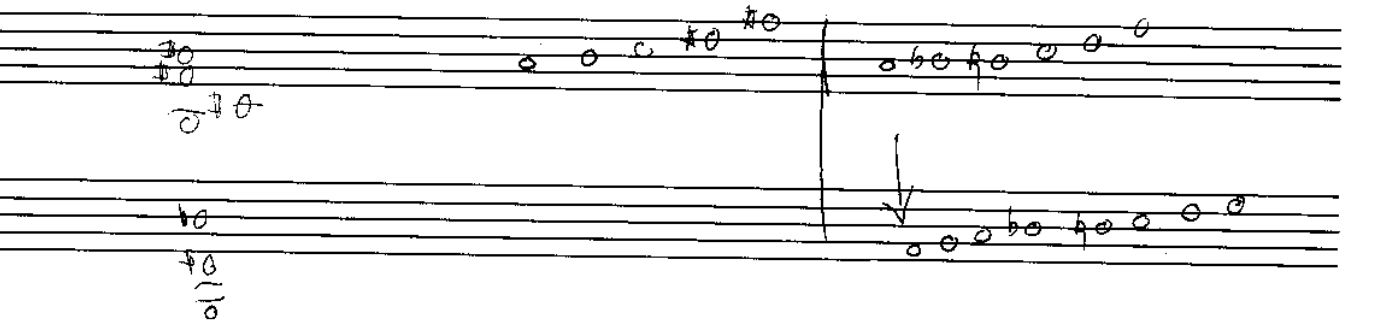
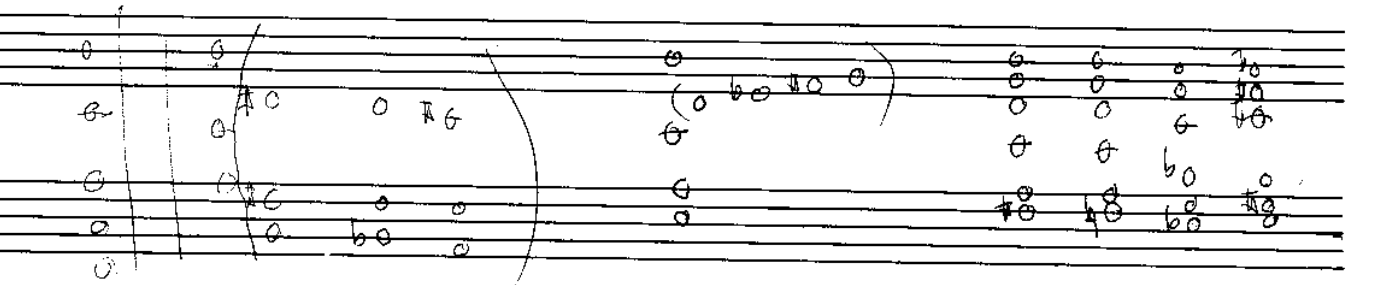
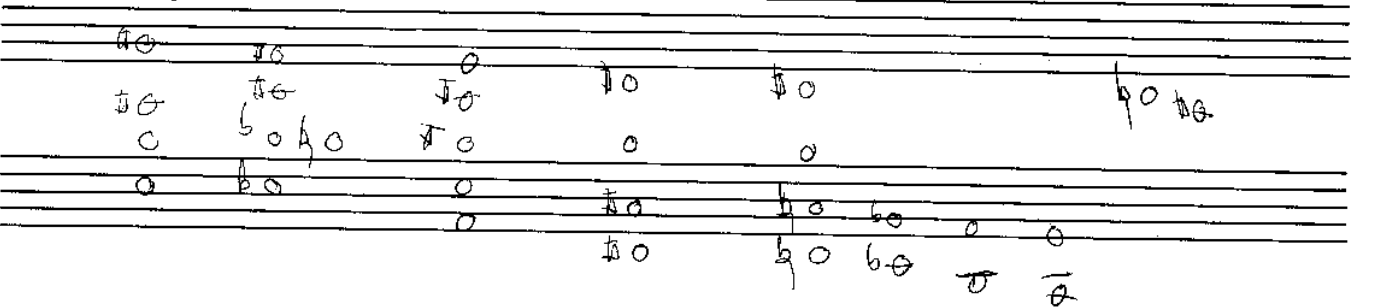


cevan

(a)

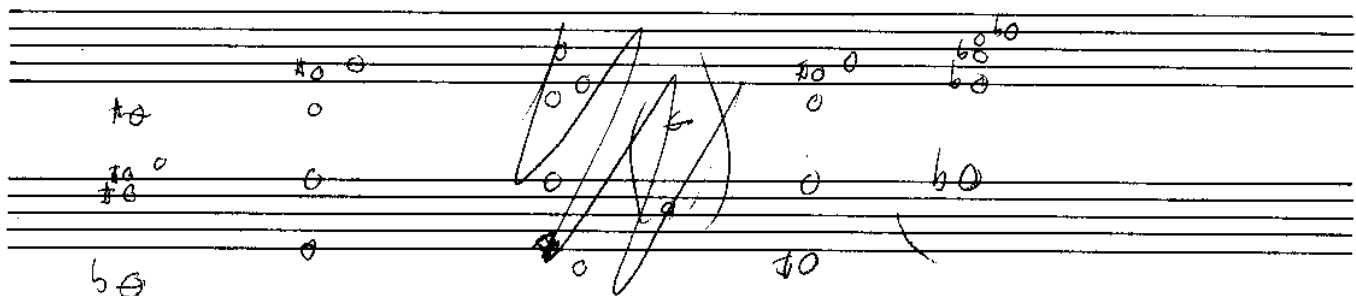
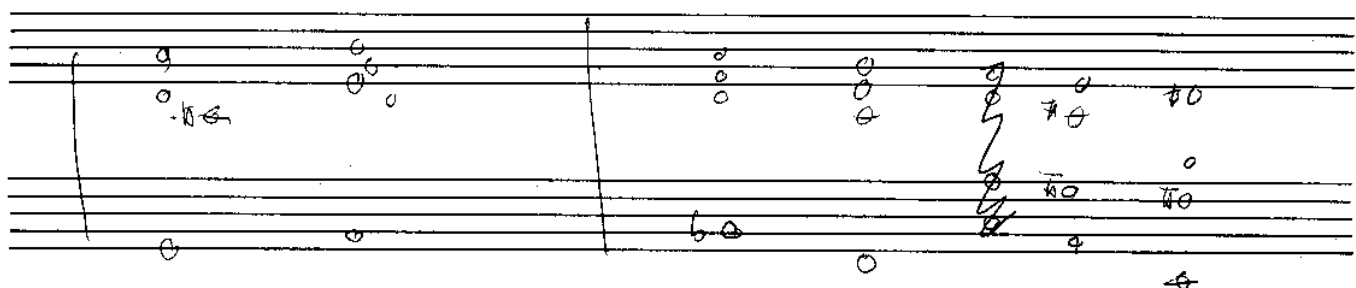
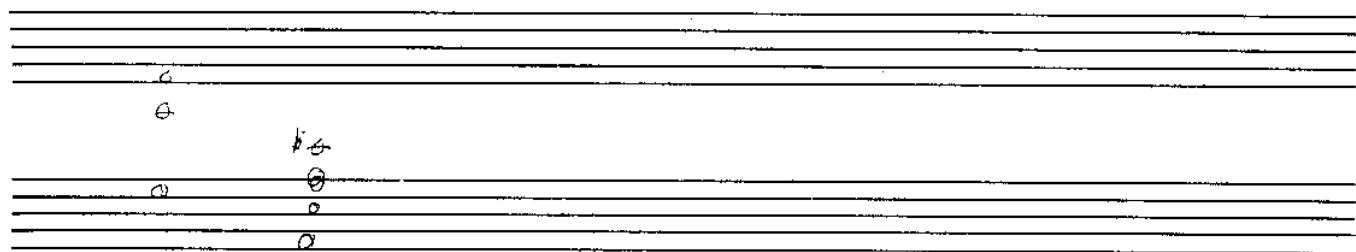
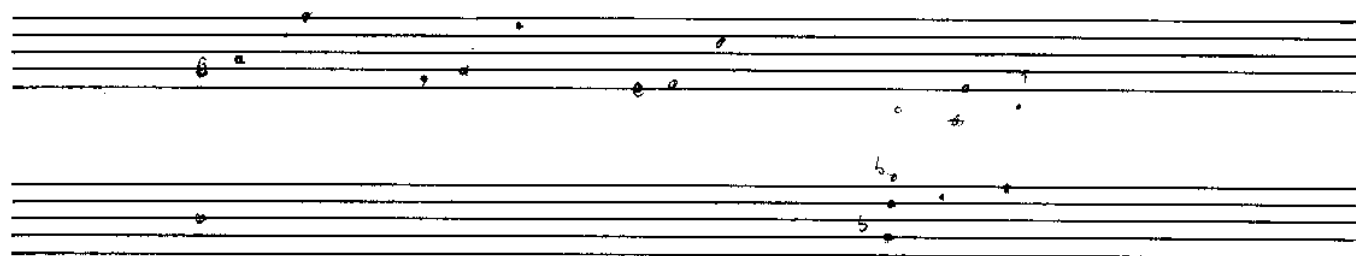


swing



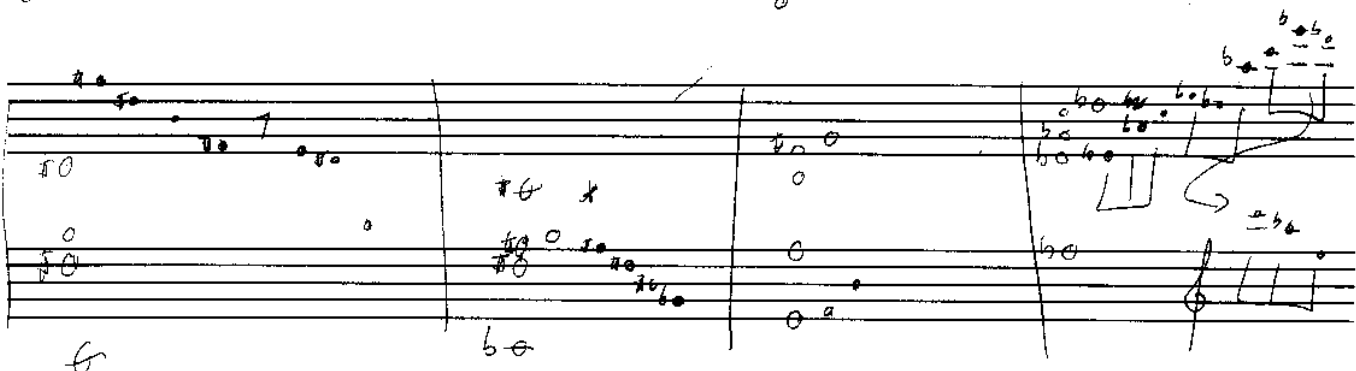
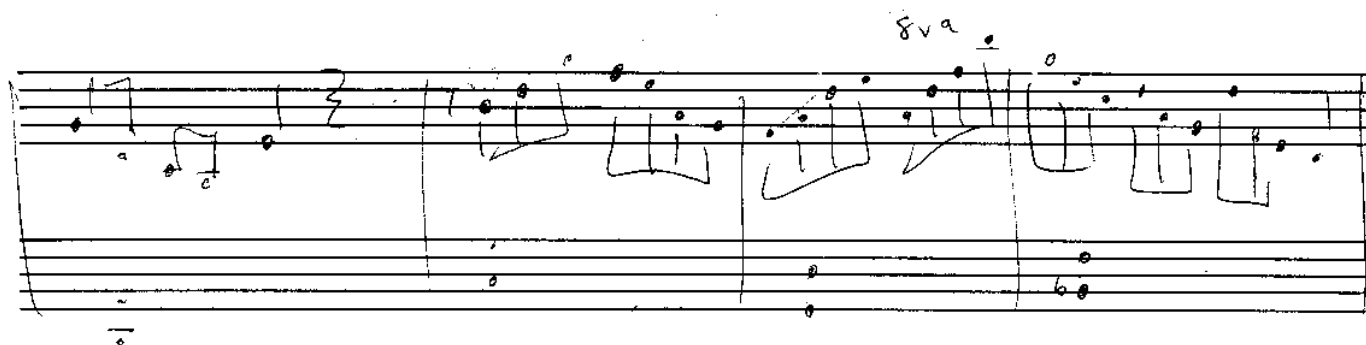
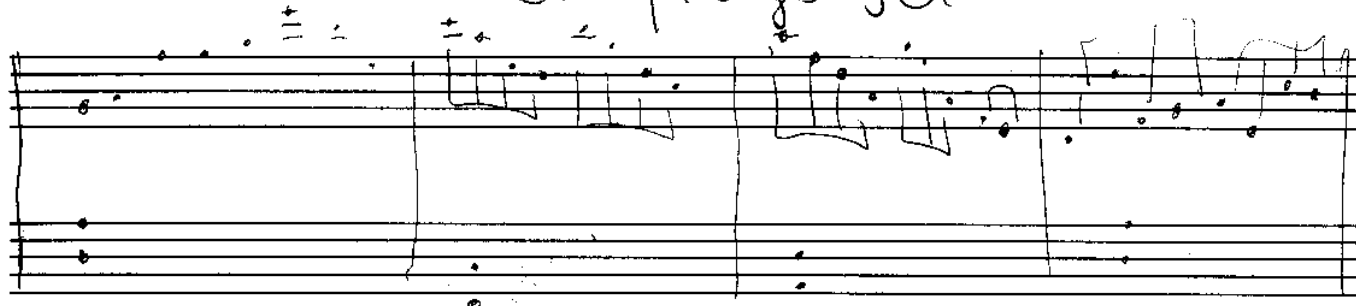
EENAN



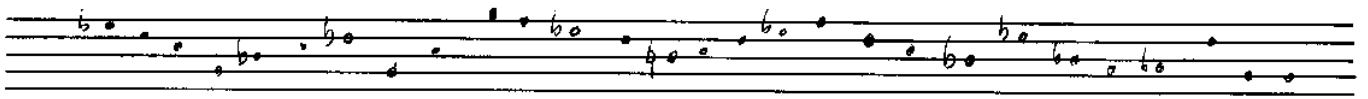


everythings set everythings fine

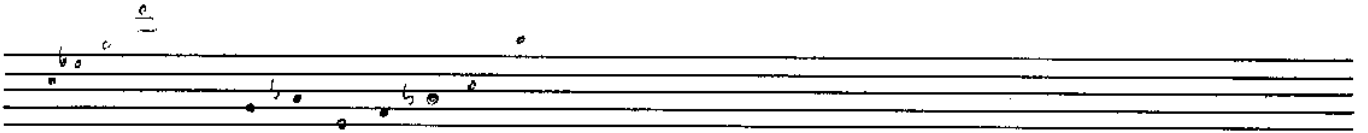
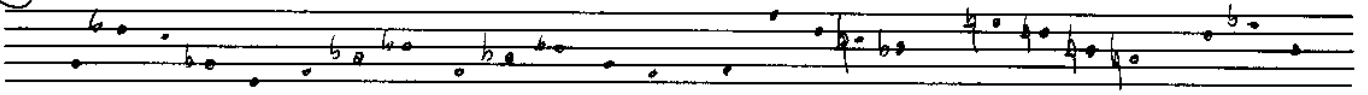
everything set



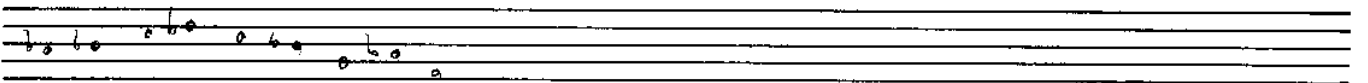
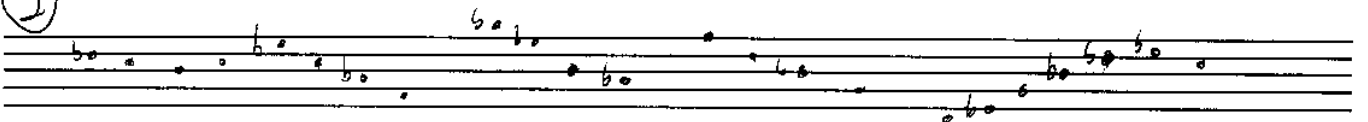
chase fried bananas



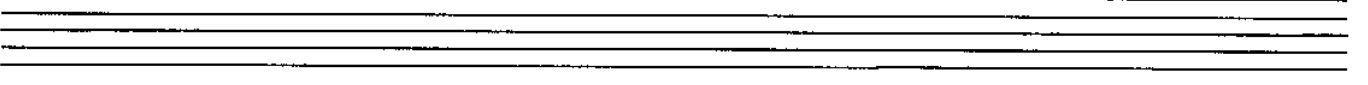
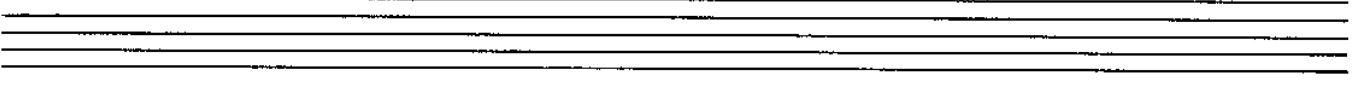
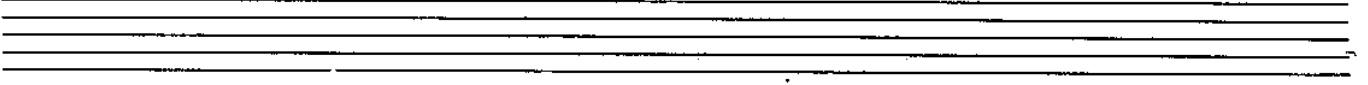
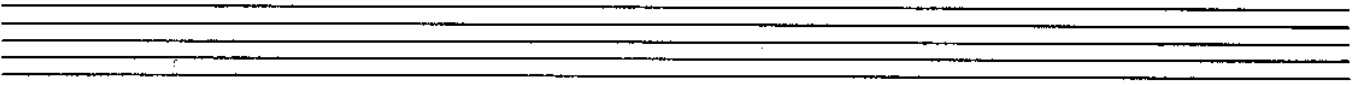
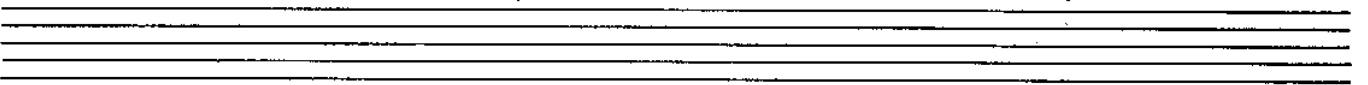
①



②



FRIED BANANAS



Handwritten musical notation on two staves. The first staff contains notes with accidentals and a large scribble. The second staff contains notes with accidentals and a large scribble. Chord symbols are written above and below the staves.

Chord symbols: f , D^- , C , B^b , G^- , D^- , B^b , C , f , B^b , G^- , C , G^- , $C7$, B^b , f .

Handwritten musical notation on two staves. The first staff contains notes with accidentals and a large scribble. The second staff contains notes with accidentals and a large scribble. Chord symbols are written above and below the staves.

Chord symbols: G^- , B^b , B^b/f , B^b , $Csus$.

german bar

Handwritten musical notation on four staves. The notation includes various notes, rests, and accidentals. The word "Bass" is written in the middle of the staves.

IDEA

[The following text is extremely faint and largely illegible due to low contrast and blurring. It appears to be a series of lines of text, possibly a list or a paragraph, spanning the width of the page.]

D | A | f | G | E | D | A | A

$\begin{array}{|c|c|c|c|c|} \hline G & E & C & D & E - \text{vamp} \\ \hline E & E & E & E^b & \end{array}$

Key of D

D | A | F | G | E | D | A | A | G | E - | C | D | (E -)

Handwritten musical notation on a five-line staff. It includes notes, rests, and some numbers (6, 7, 8) written below the staff.

Handwritten musical notation on a five-line staff, continuing the sequence from the previous staff.

Handwritten musical notation on a five-line staff. The text "key of D" is written in the upper right area of the staff.

Handwritten musical notation on a five-line staff, featuring various note values and rests.

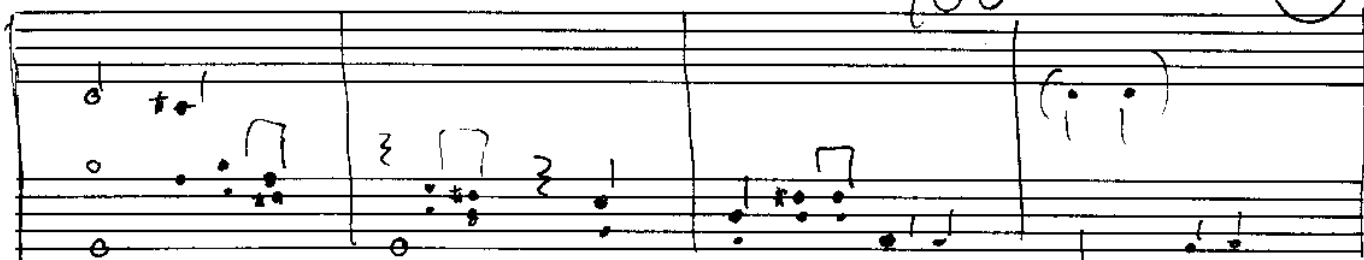
Handwritten musical notation on a five-line staff, with some notes marked with a sharp sign (#).

Handwritten musical notation on a five-line staff. The letters "D" and "A" are written above the staff at different points.

Handwritten musical notation on a five-line staff. The letters "G", "E -", and "C" are written above the staff at different points.

G

D

COOKING THRU (2)
YOU

G

A

D.5



~ where did you go
I thought I knew you what did I know

you don't look different but you have changed
I'm your not the same

your lips are moving I cannot bear
your voice is soothing but the words aren't clear

you don't sound different I've learned the game
~ your not the same

why tell me why did you not treat me right
you has a nasty habit of disappearing one night

your thinking of me the same old way
you were above me but not today

the only difference is yr not there

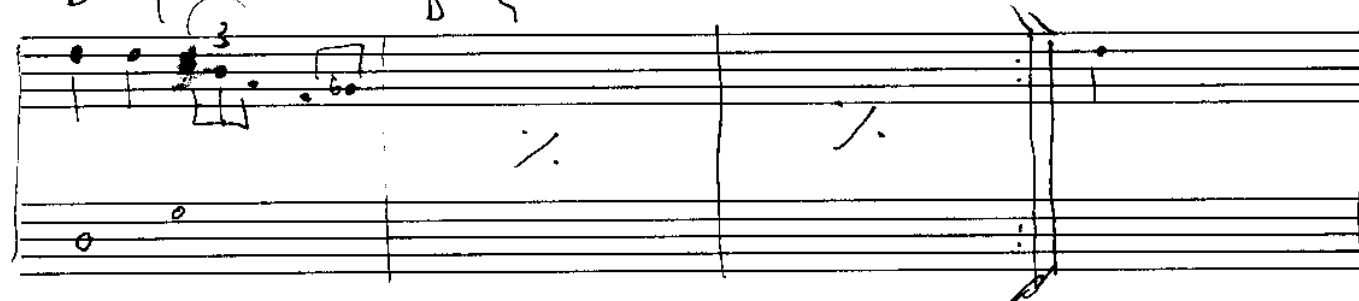
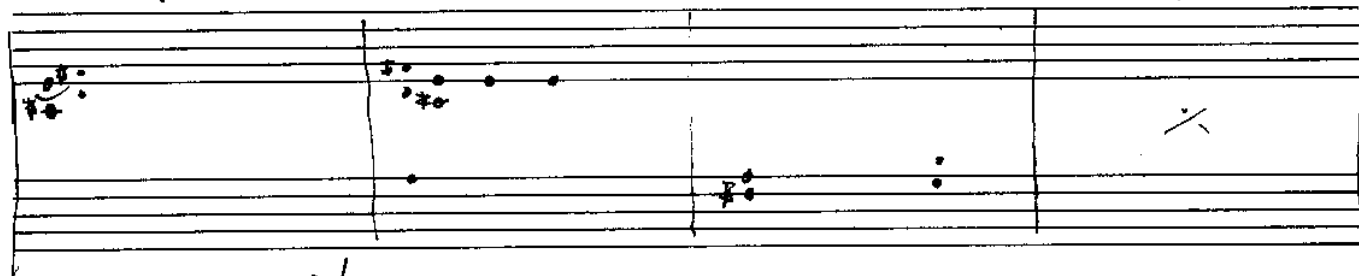
~ & your nowhere

repeat 1st verse

D pedal

looking thru you

(bass d) ~~17~~ 17 17 17



new Orleans?

MAI MAI

Handwritten musical notation on a five-line staff. The notation includes a treble clef, a key signature of one flat (B-flat), and a 2/4 time signature. The melody consists of quarter and eighth notes. Above the staff, the following chords are written: D- (above the first measure), G7 (above the second measure), F/A (above the third measure), Bb (above the fourth measure), and (A) (above the fifth measure).

Handwritten musical notation on a five-line staff. The notation includes a treble clef, a key signature of one flat (B-flat), and a 2/4 time signature. The melody consists of quarter and eighth notes. Above the staff, the following chords are written: G- (above the first measure), C7 (above the second measure), F#7 (above the third measure), and Bb7 (above the fourth measure). The notation includes some scribbles and corrections.

Handwritten musical notation on a five-line staff. The notation includes a treble clef, a key signature of one flat (B-flat), and a 2/4 time signature. The melody consists of quarter and eighth notes. Above the staff, the following chords are written: G- (above the first measure), D- (above the second measure), and A- (above the third measure). The notation includes some scribbles and corrections.

Handwritten musical notation on a five-line staff. The notation includes a treble clef, a key signature of one flat (B-flat), and a 2/4 time signature. The melody consists of quarter and eighth notes. Above the staff, the following chords are written: G- (above the first measure), D- (above the second measure), and A- (above the third measure). The notation includes some scribbles and corrections.

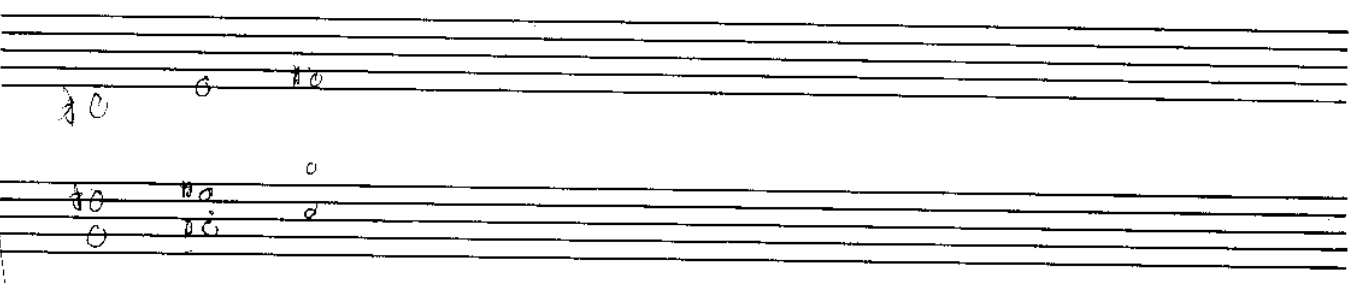
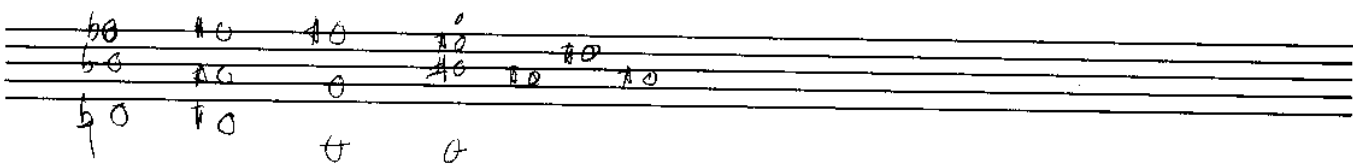
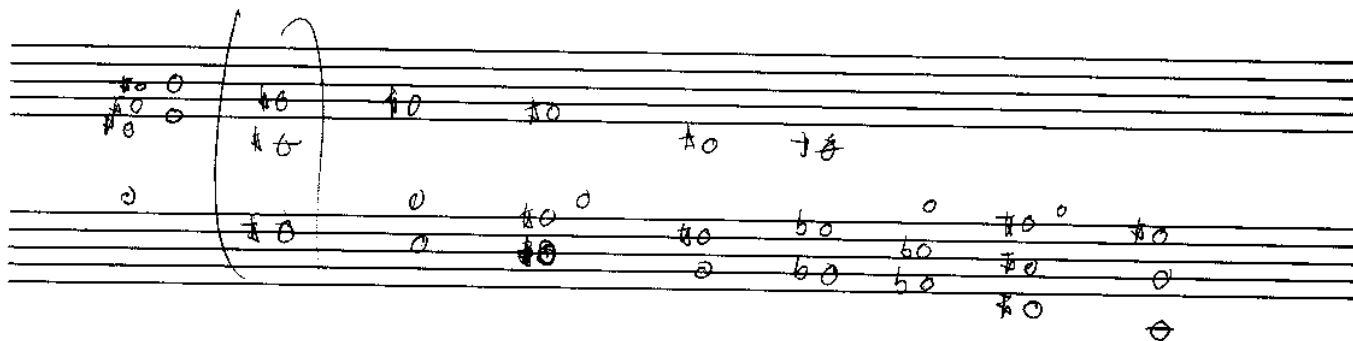
Handwritten musical notation on a five-line staff. The notation includes a treble clef, a key signature of one flat (B-flat), and a 2/4 time signature. The melody consists of quarter and eighth notes. Above the staff, the following chords are written: G- (above the first measure), A- (above the second measure), Bb (above the third measure), and C7 (above the fourth measure). The notation includes some scribbles and corrections.

Handwritten musical notation on a five-line staff. The notation includes a treble clef, a key signature of one flat (B-flat), and a 2/4 time signature. The melody consists of quarter and eighth notes. Above the staff, the following chord is written: D7sus (above the first measure). The notation includes some scribbles and corrections.

NEW GIANT STEPS

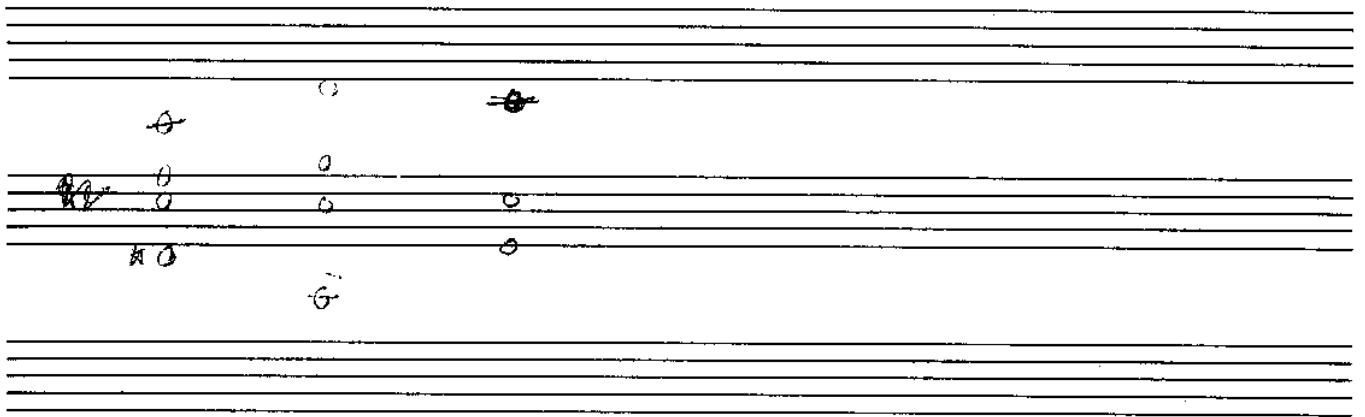
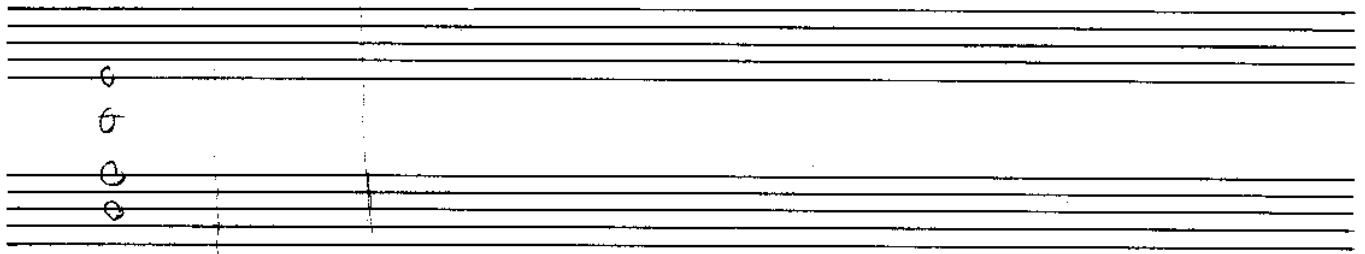
B B⁵7 | E D7 | G | B7 | E D7 | G F | B | A- D7 |

ζ	$F - B \gamma$	\in^S	$C \overset{*}{\neg} F \overset{k}{\gamma}$	B	$A - \gamma \text{ O} \gamma$	ζ	$C \overset{*}{\neg} F \overset{*}{\gamma}$
---------	----------------	---------	---	-----	-------------------------------	---------	---



NO TITLE

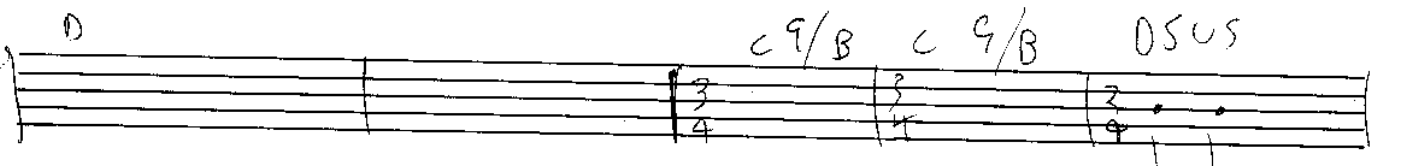
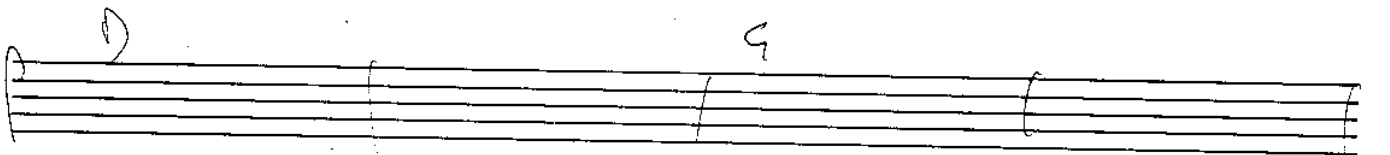
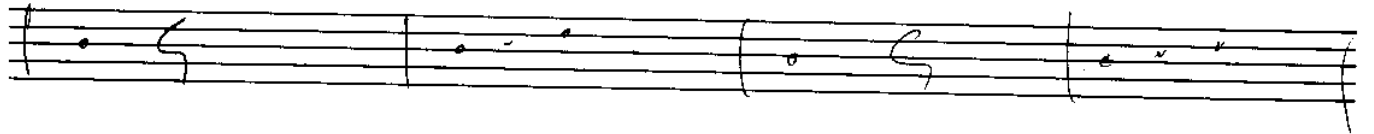
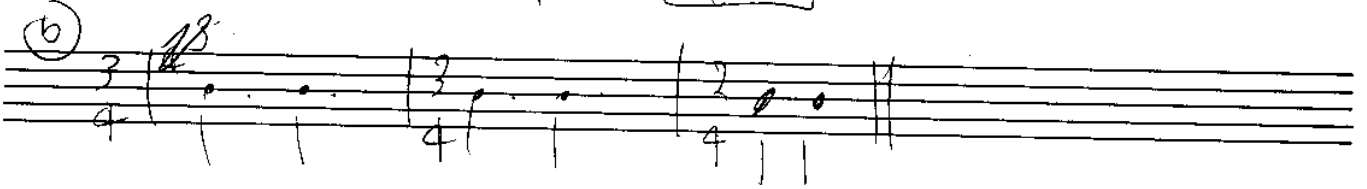
NORIKO



Rhinestone cowboy clunny

groove (a)

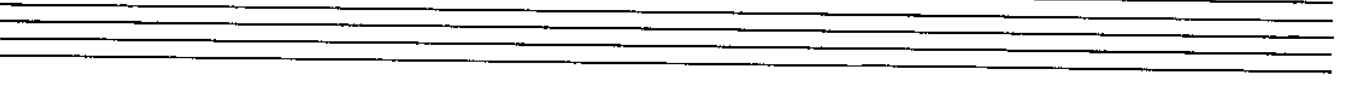
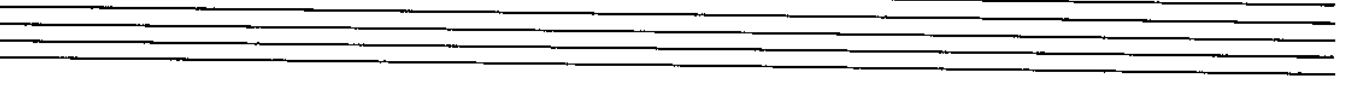
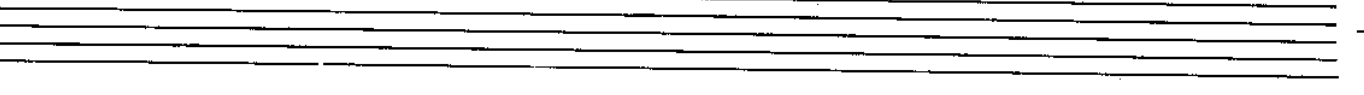
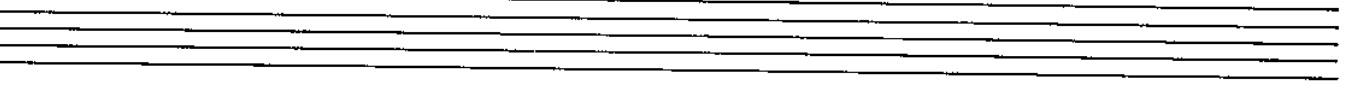
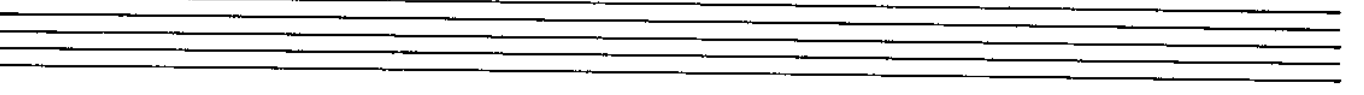
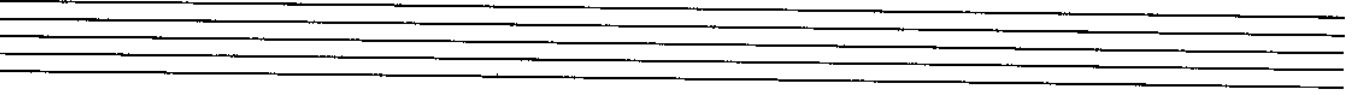
2 bar phrase



RHYTHM ANALYSIS

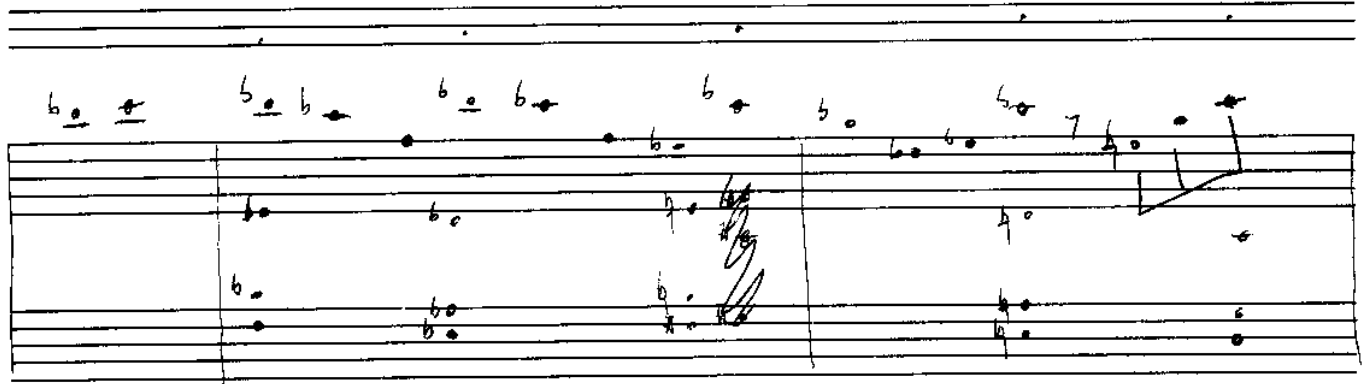
HEAD

B^b

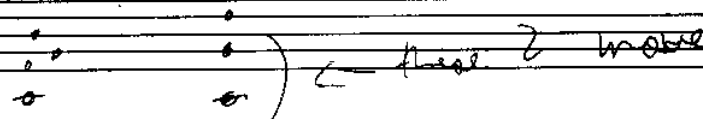


SUPER LICKS!

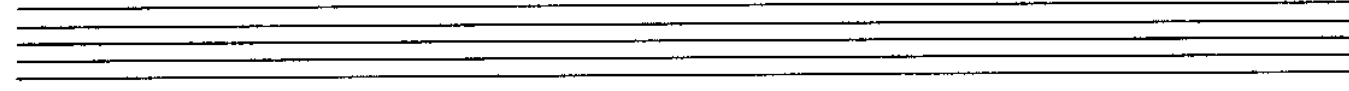
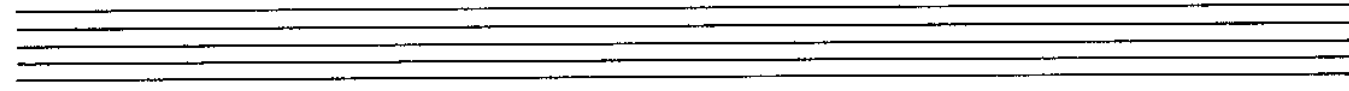
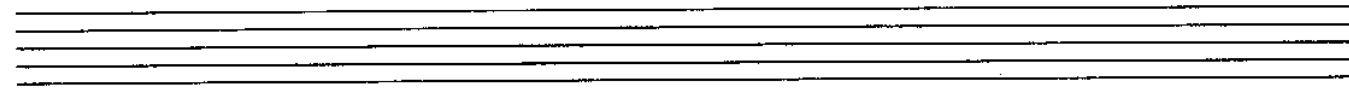
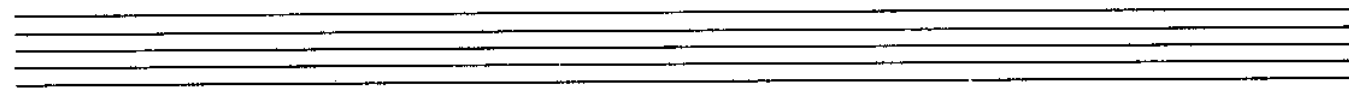
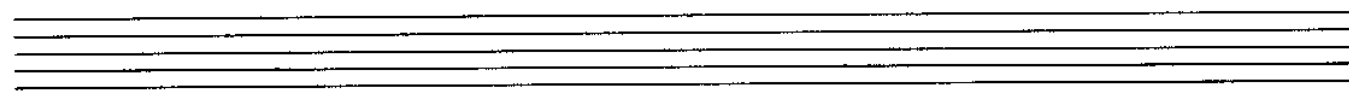
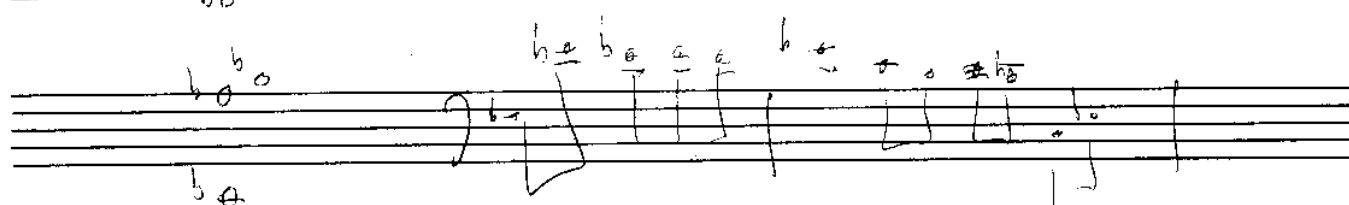
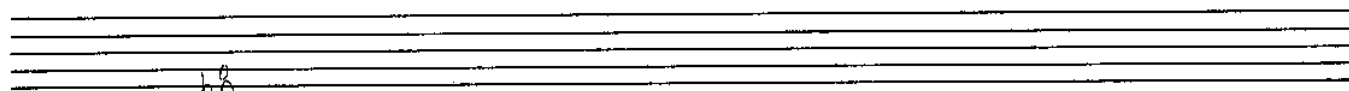
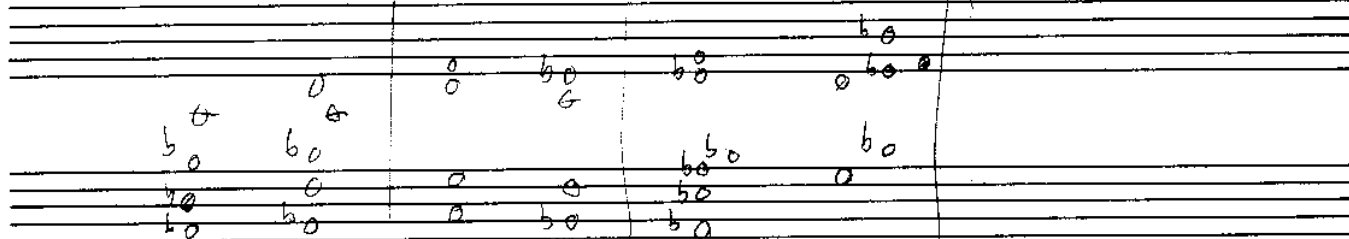
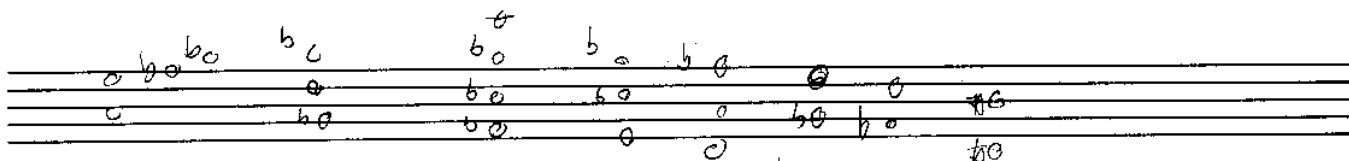
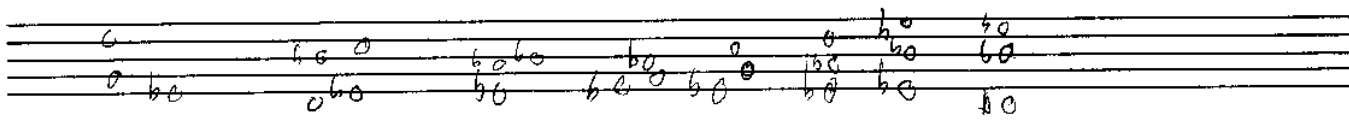
kenny songbook 3.29



cool left hand shit



UNTIL.

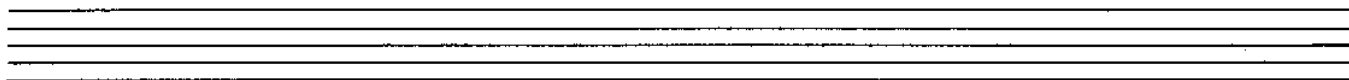
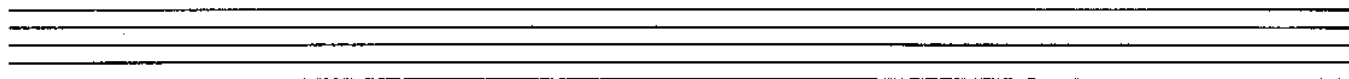
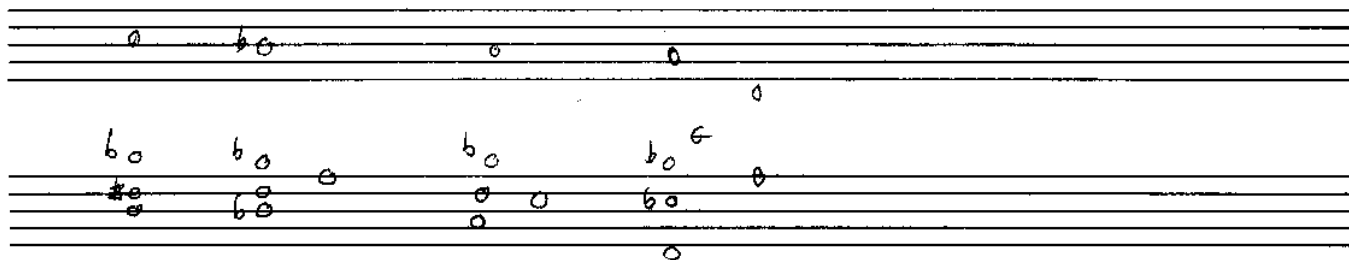
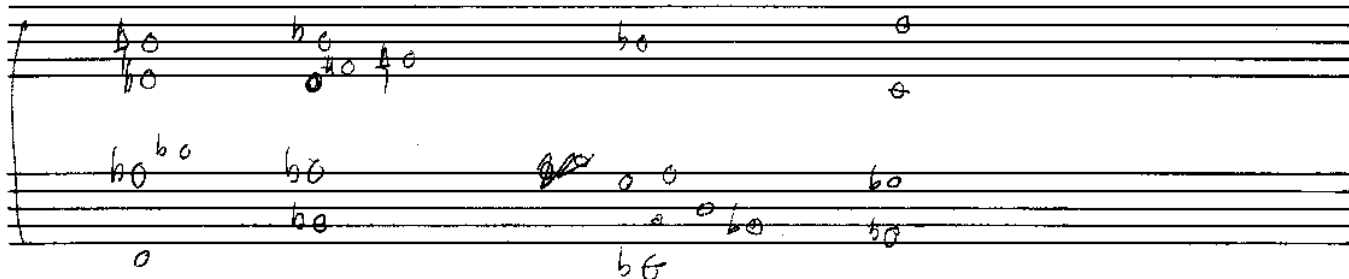
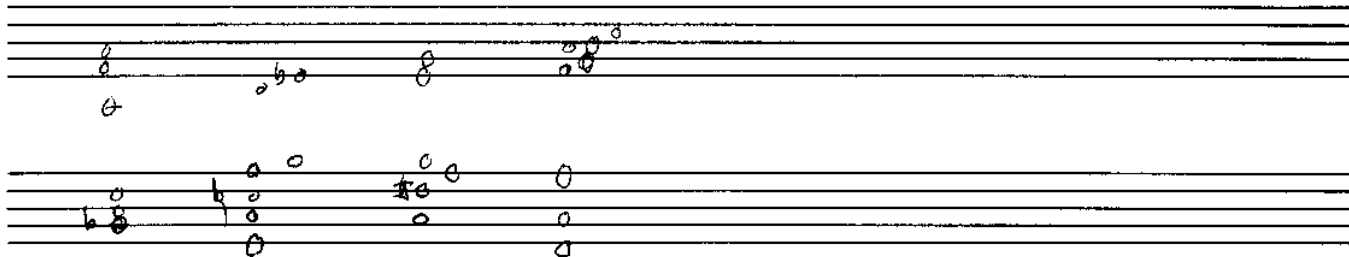


UNTITLED

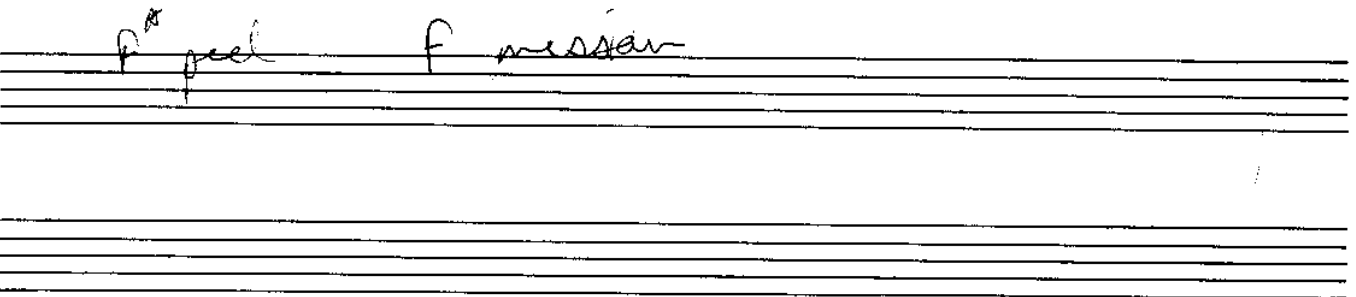
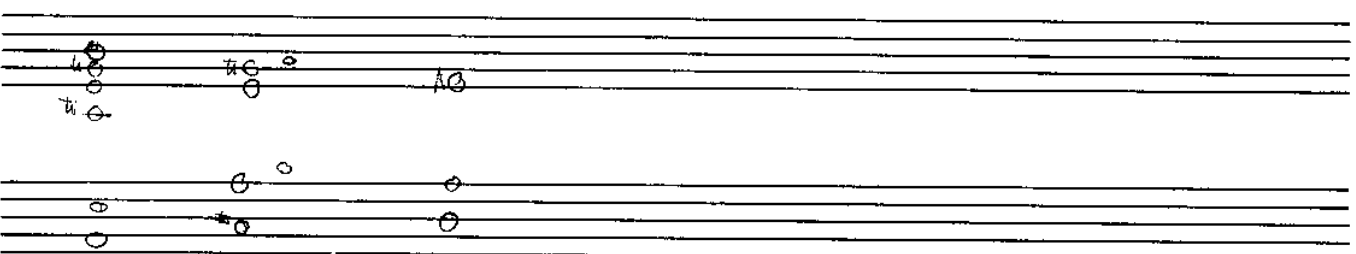
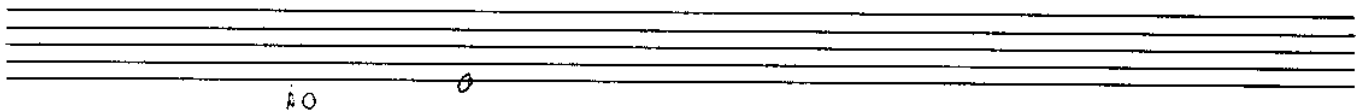
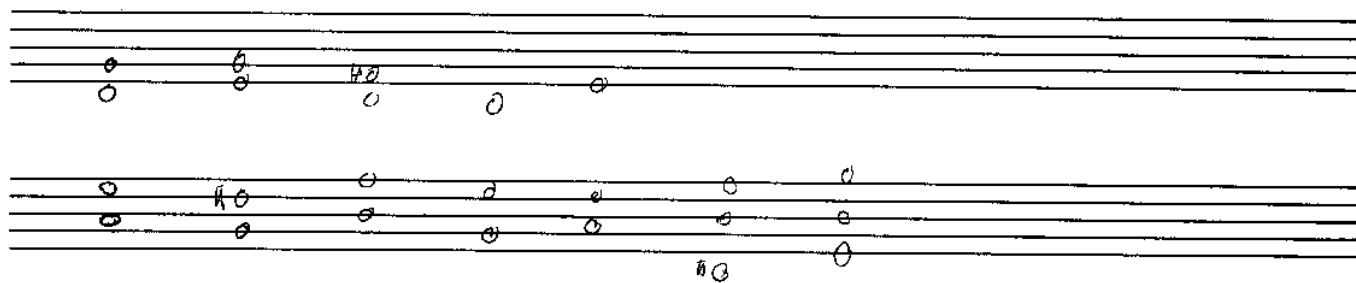
The image shows a page of handwritten musical notation on ten systems of five-line staves. The notation is sparse and includes various symbols and notes:

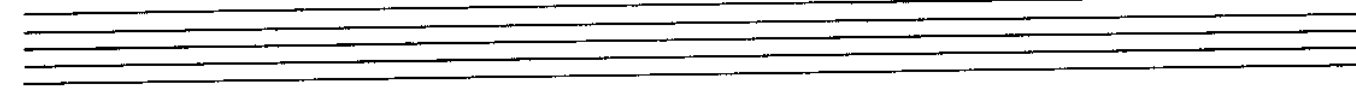
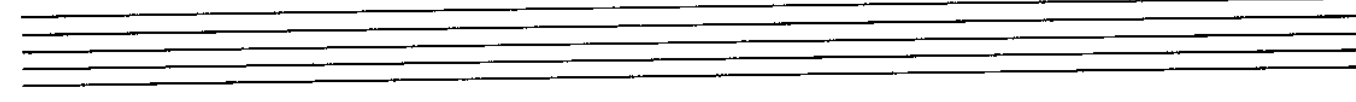
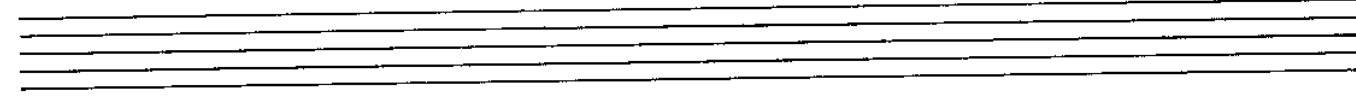
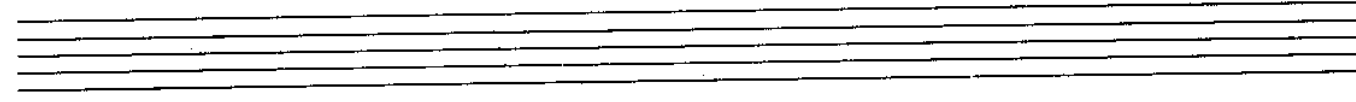
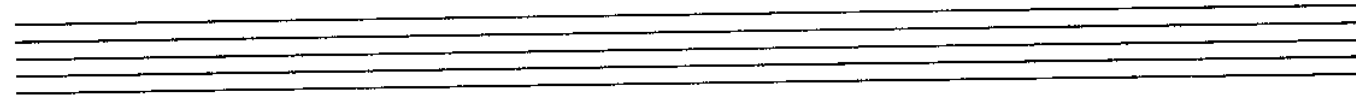
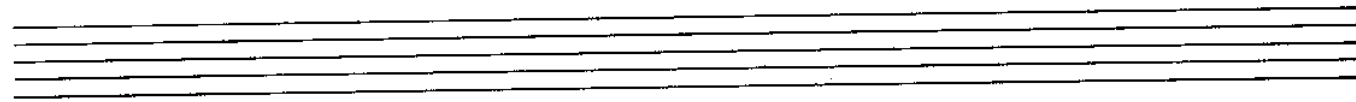
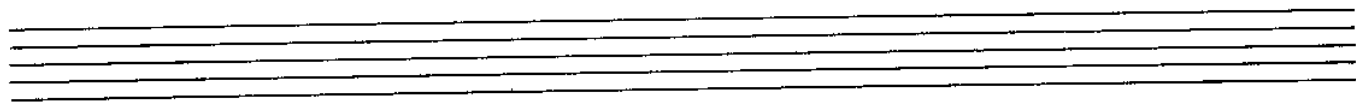
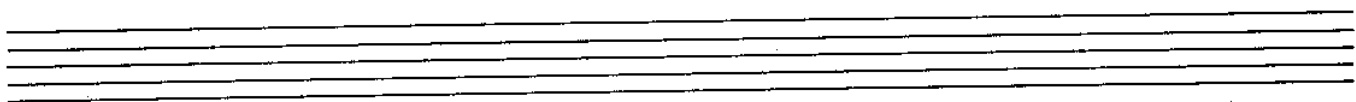
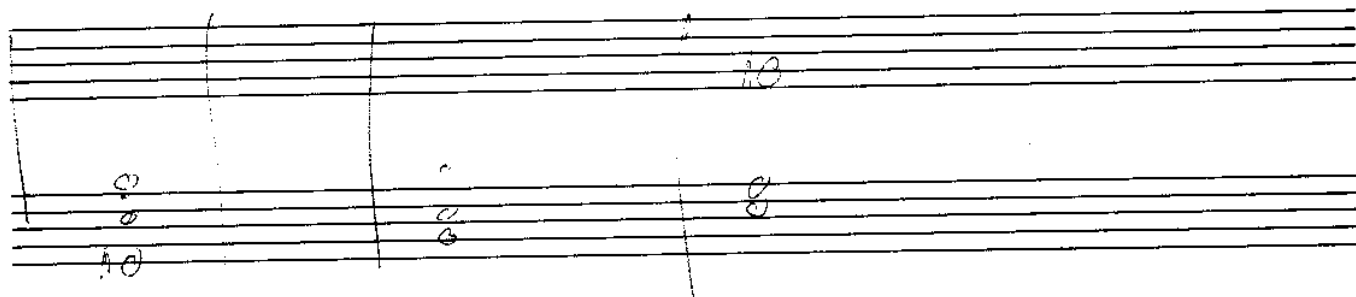
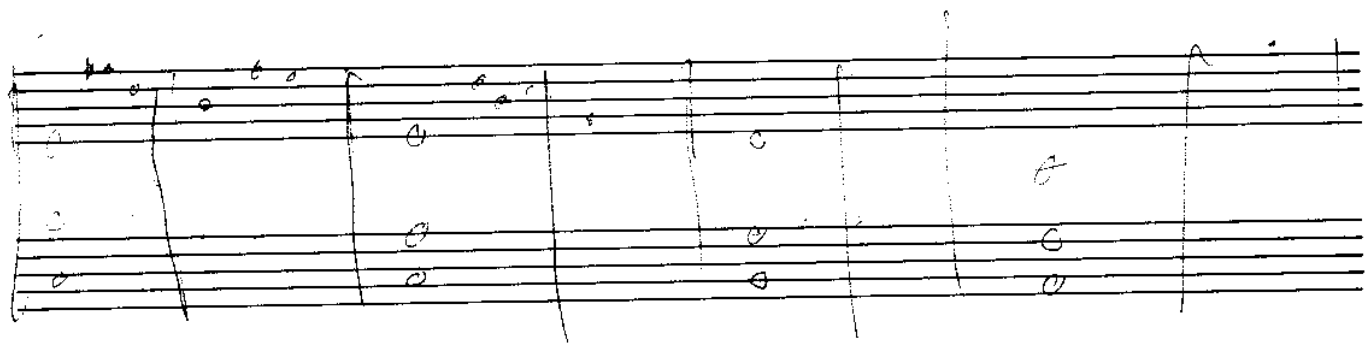
- System 1:** The first staff has a note with a flat (F) and a whole note. The second staff has a note with a flat (F) and a whole note, followed by a rest.
- System 2:** The first staff has a note with a flat (F) and a whole note. The second staff has a note with a flat (F) and a whole note, followed by a rest. The third staff has a note with a flat (F) and a whole note, followed by a rest.
- System 3:** The first staff has a note with a flat (F) and a whole note. The second staff has a note with a flat (F) and a whole note, followed by a rest. The third staff has a note with a flat (F) and a whole note, followed by a rest. A double bar line is present in the third staff.
- System 4:** The first staff has a note with a flat (F) and a whole note. The second staff has a note with a flat (F) and a whole note, followed by a rest. The third staff has a note with a flat (F) and a whole note, followed by a rest.
- System 5:** The first staff has a note with a flat (F) and a whole note. The second staff has a note with a flat (F) and a whole note, followed by a rest. The third staff has a note with a flat (F) and a whole note, followed by a rest.
- System 6:** The first staff has a note with a flat (F) and a whole note. The second staff has a note with a flat (F) and a whole note, followed by a rest. The third staff has a note with a flat (F) and a whole note, followed by a rest.
- System 7:** The first staff has a note with a flat (F) and a whole note. The second staff has a note with a flat (F) and a whole note, followed by a rest. The third staff has a note with a flat (F) and a whole note, followed by a rest.
- System 8:** The first staff has a note with a flat (F) and a whole note. The second staff has a note with a flat (F) and a whole note, followed by a rest. The third staff has a note with a flat (F) and a whole note, followed by a rest.
- System 9:** The first staff has a note with a flat (F) and a whole note. The second staff has a note with a flat (F) and a whole note, followed by a rest. The third staff has a note with a flat (F) and a whole note, followed by a rest.
- System 10:** The first staff has a note with a flat (F) and a whole note. The second staff has a note with a flat (F) and a whole note, followed by a rest. The third staff has a note with a flat (F) and a whole note, followed by a rest.

UNTITLED

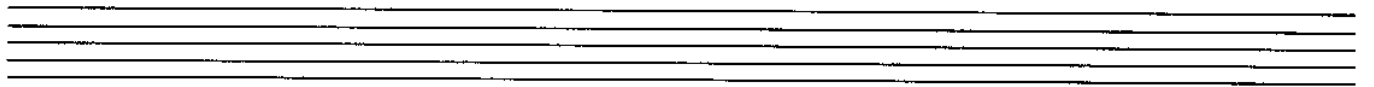
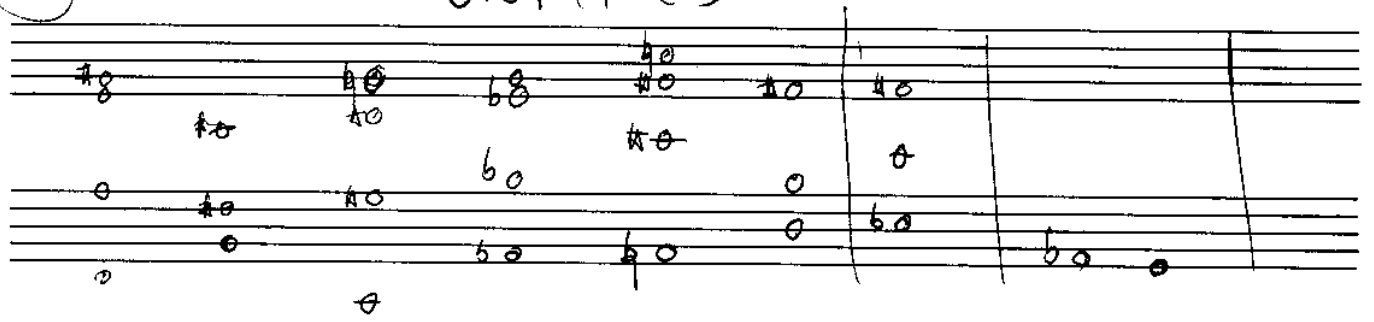


UNTITLED

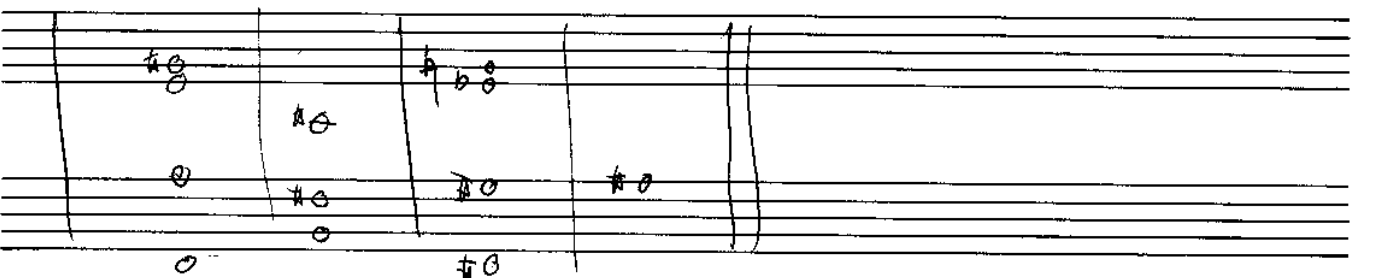
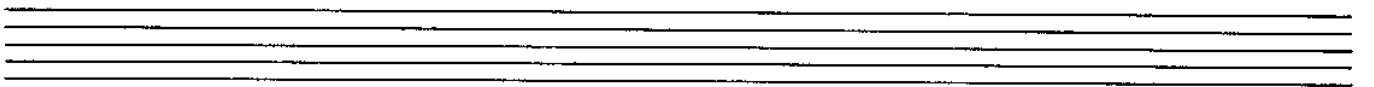




UNTITLED



2 bar groove 4 A





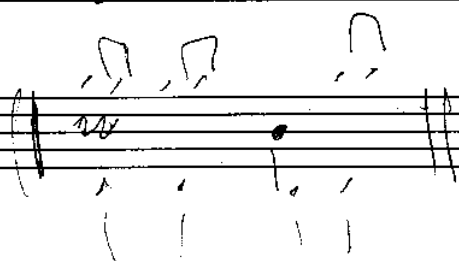
UNTITLED

Blowing

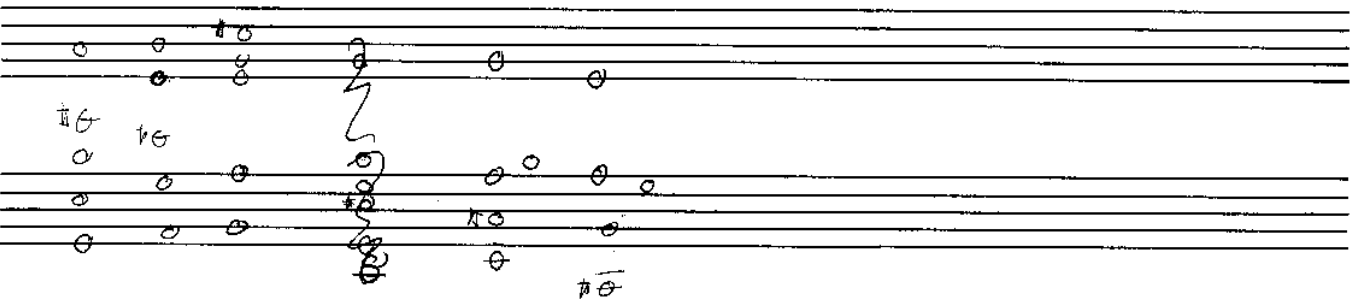
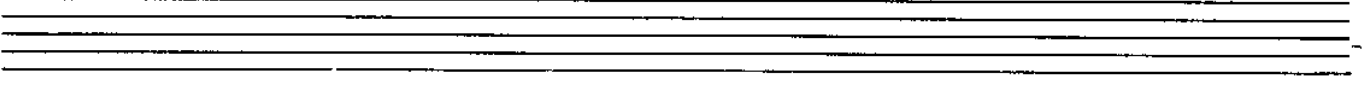
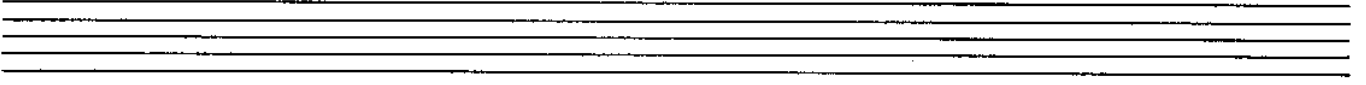
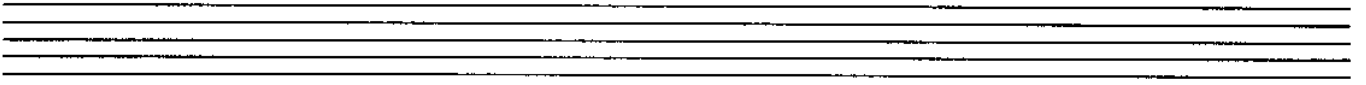
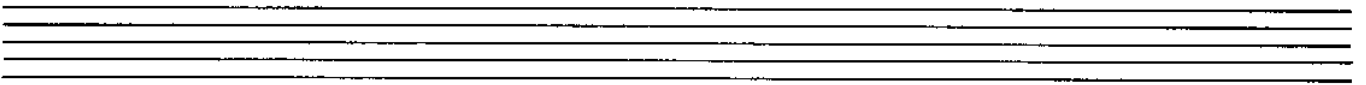
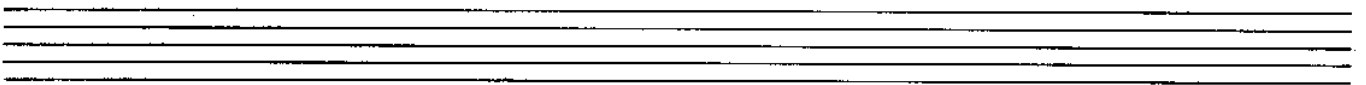
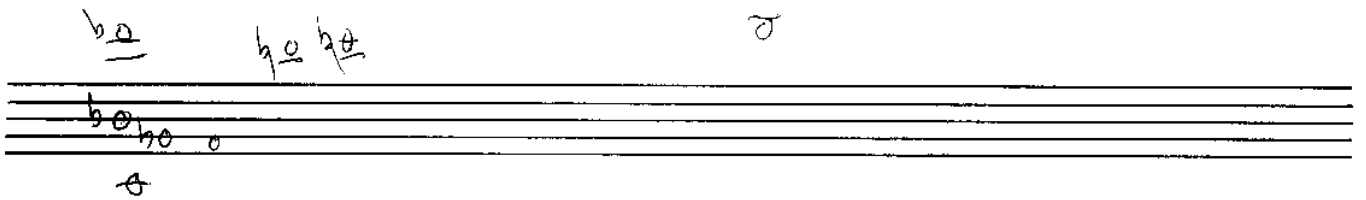
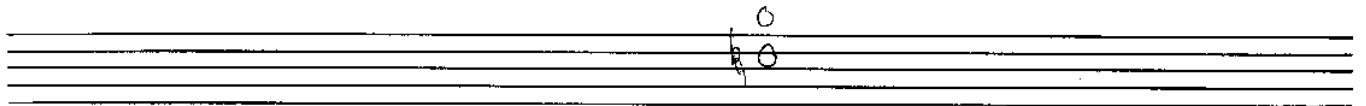
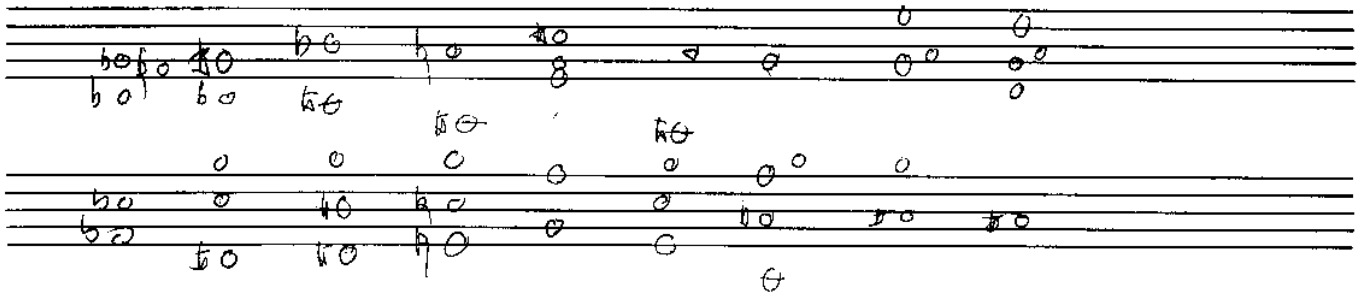
growl then

double time swing

2 bars per chord



UNTITLED



D

/F#

G

A

A/C# D

D/F#

G

A/G

B-/E

G6/A

A6

G#7/A

C

G

F

A-

G-

Dsus

A(b6)

E7

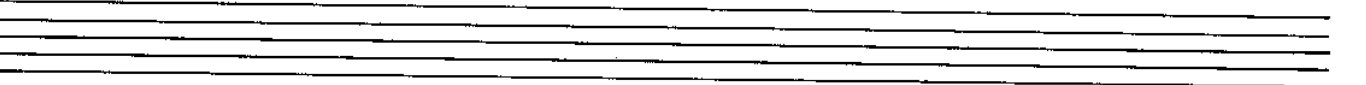
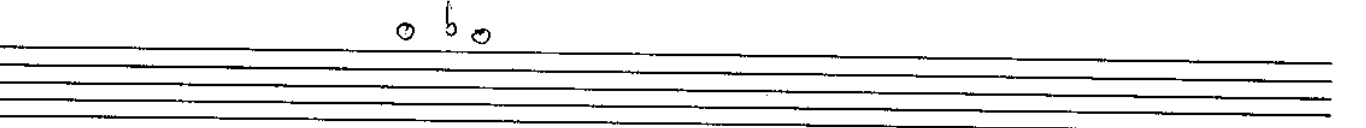
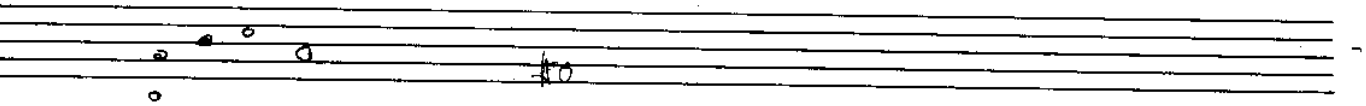
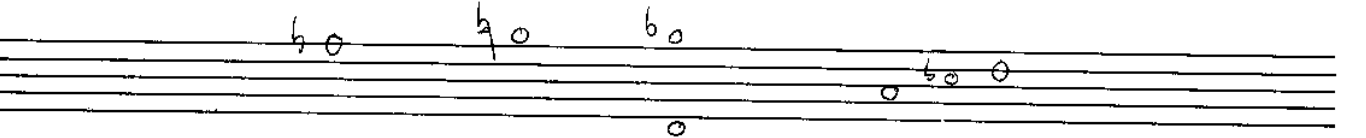
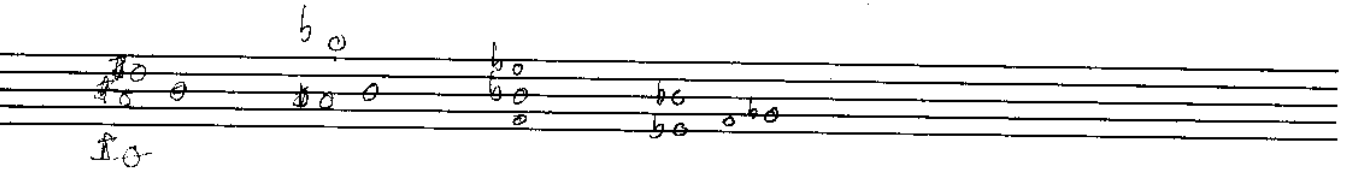
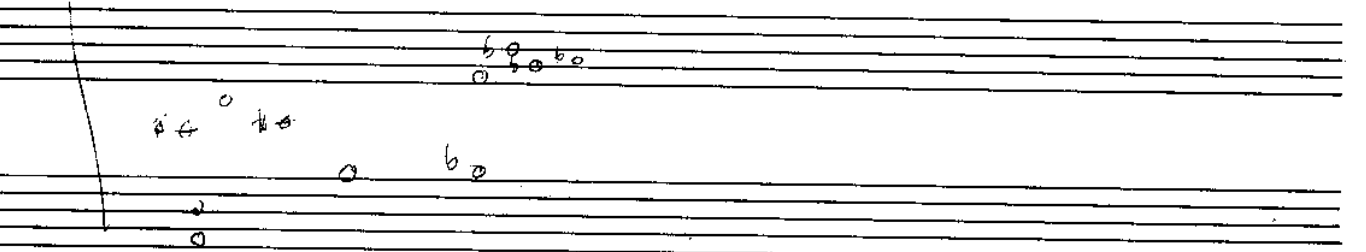
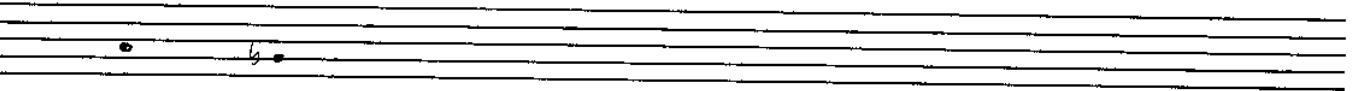
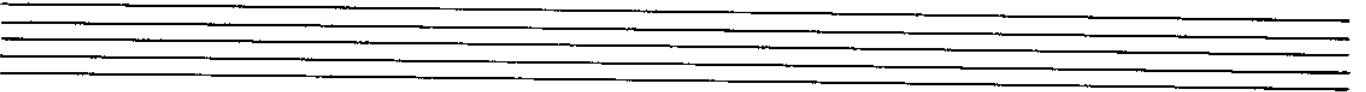
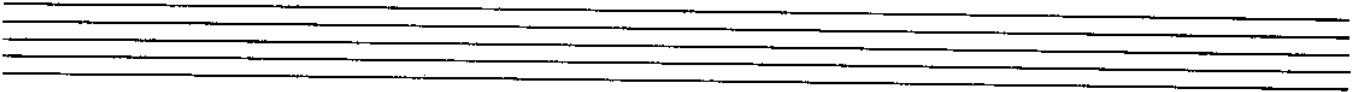
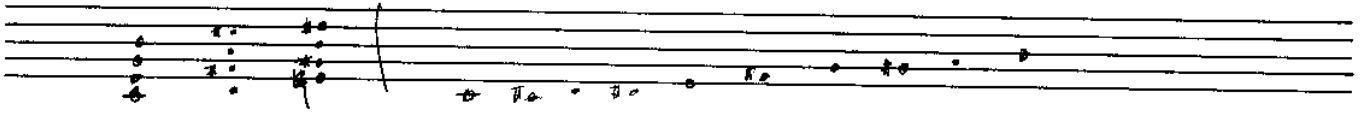
A sus

F69

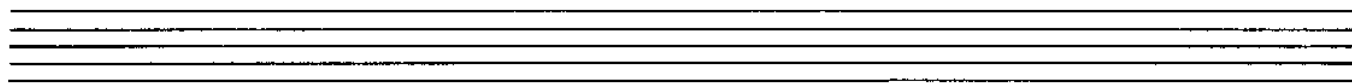
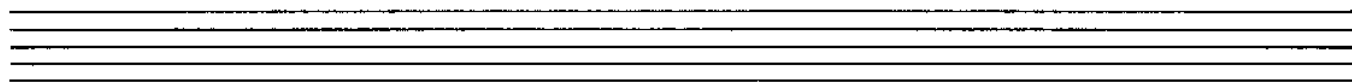
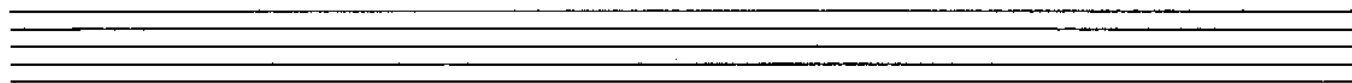
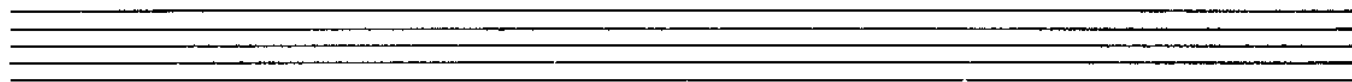
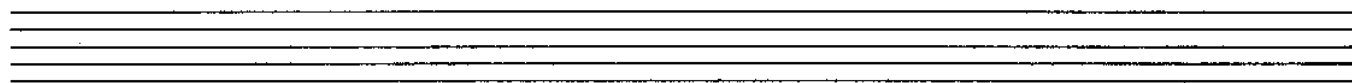
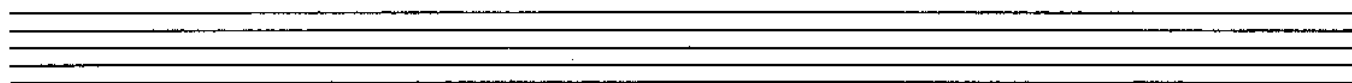
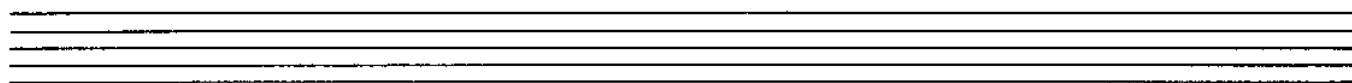
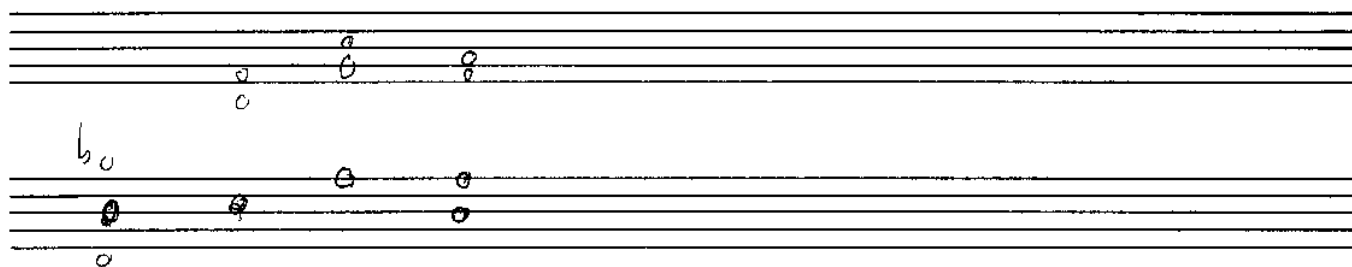
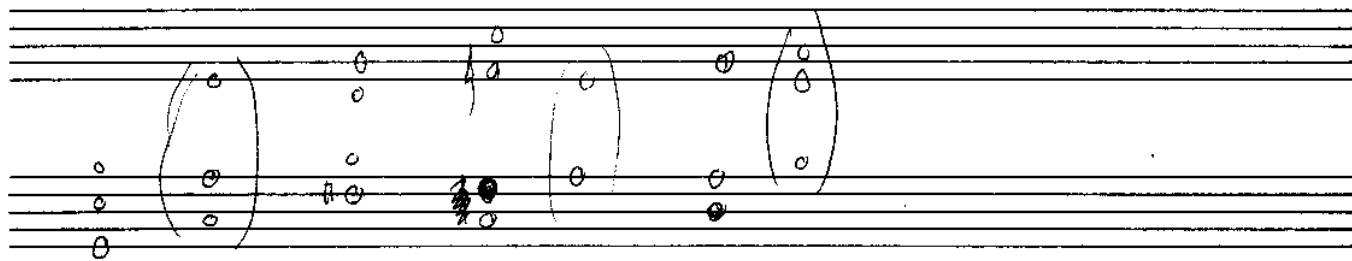
A

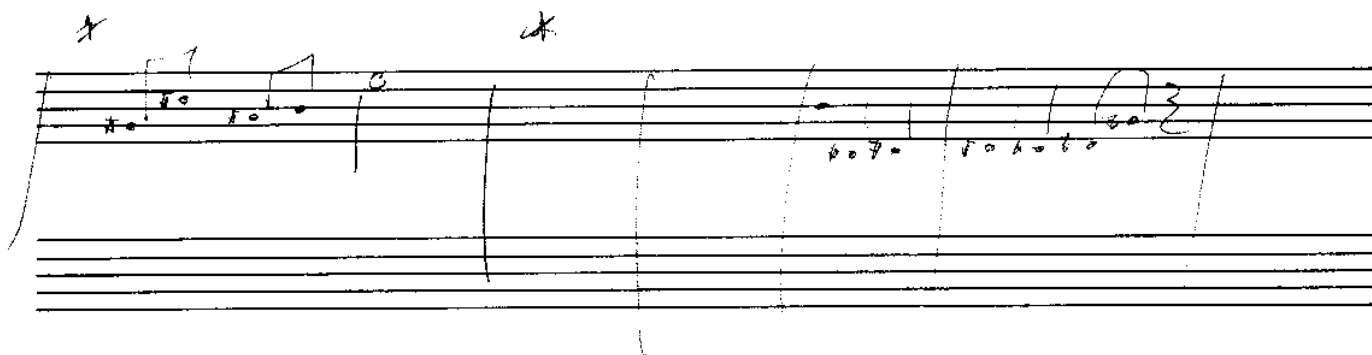
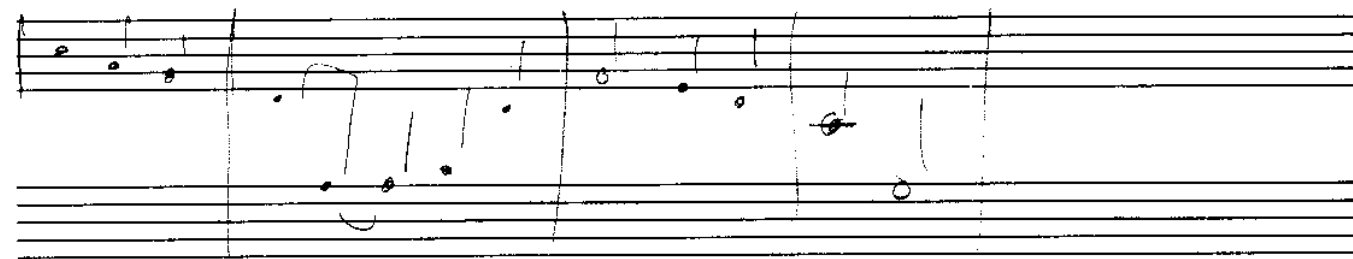
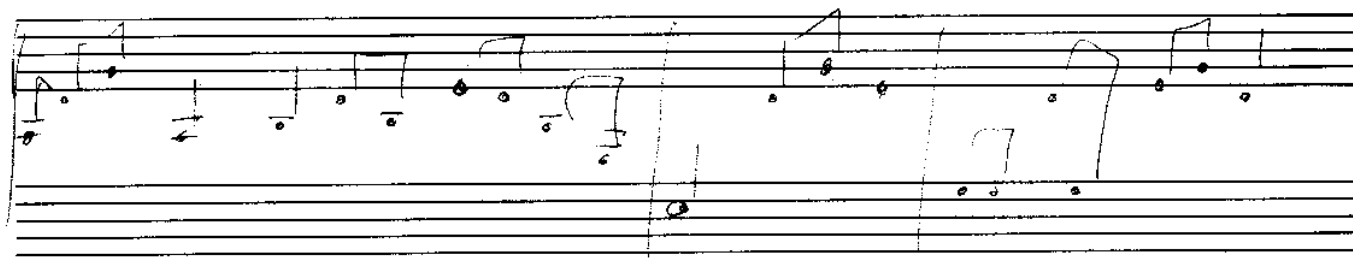
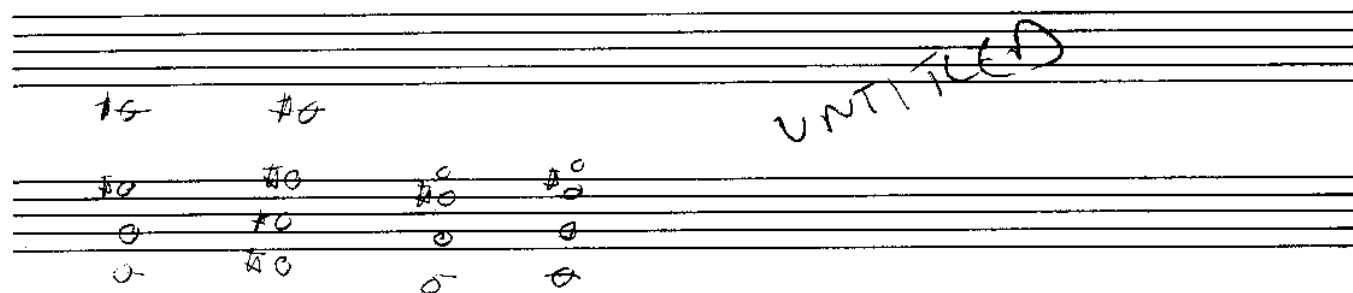
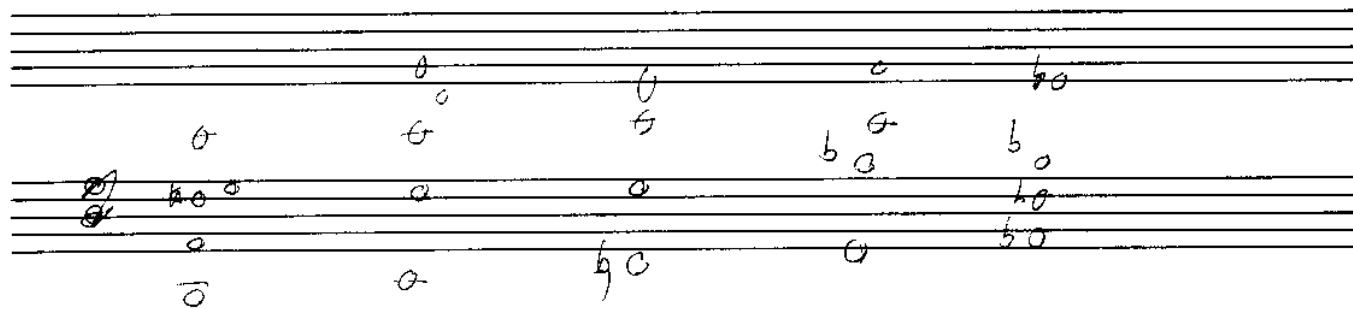
UNTITLED

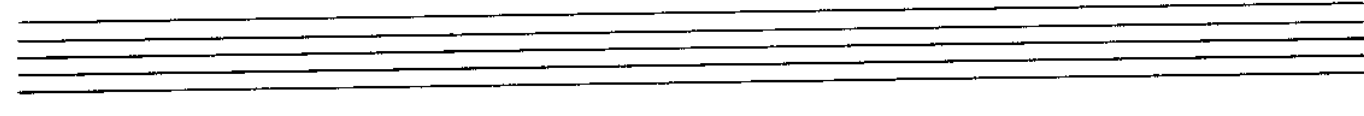
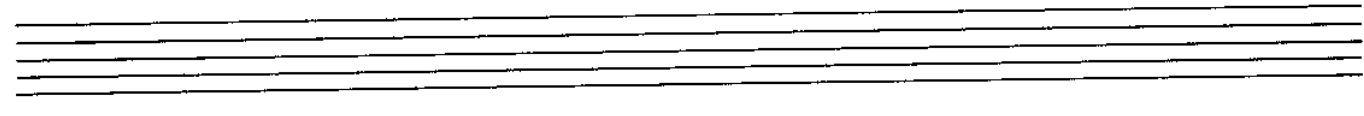
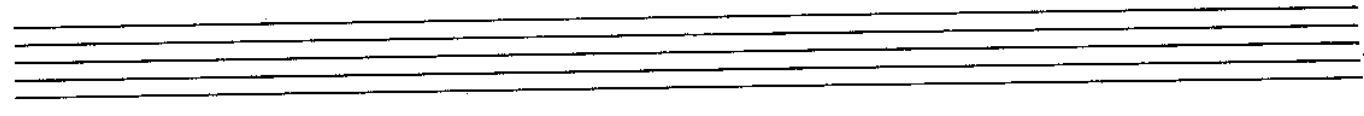
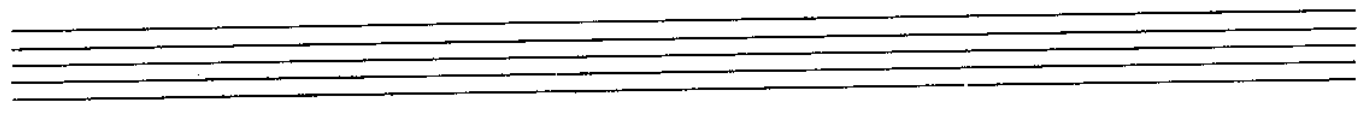
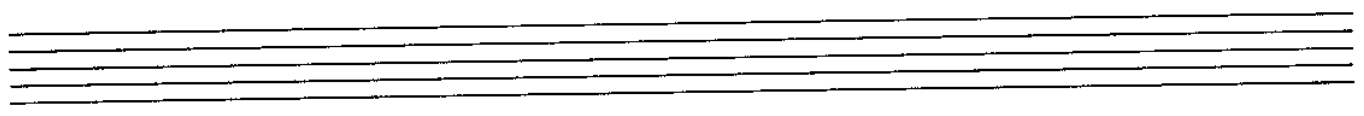
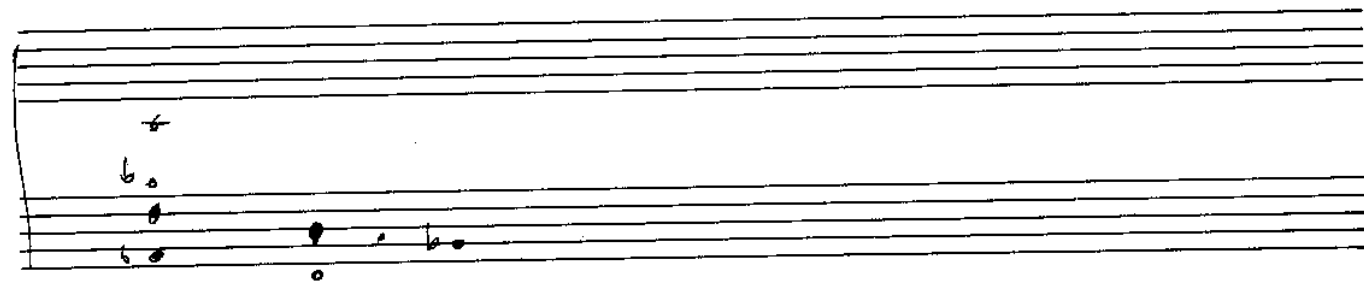
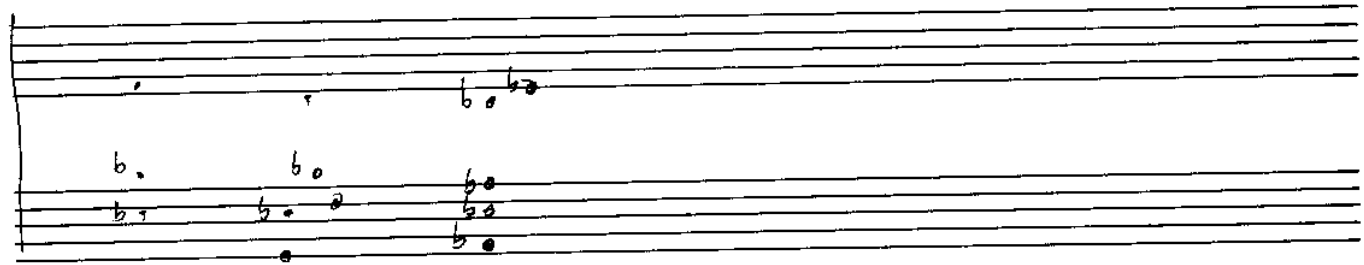
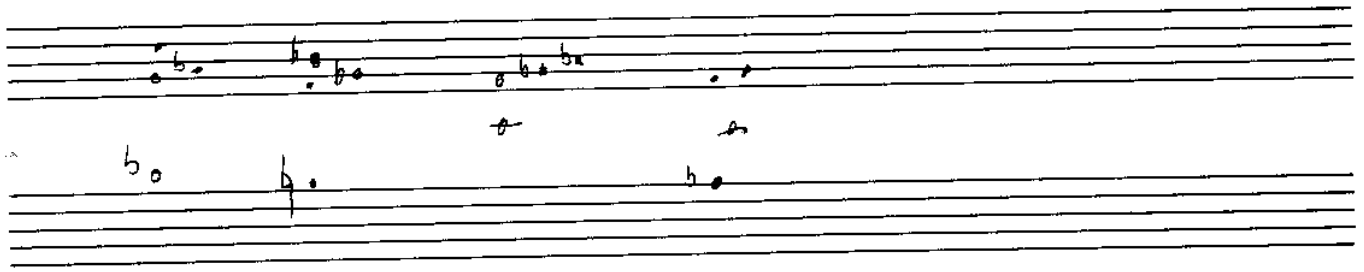
UNTITLED



UNTITLED D







WESTERN

Handwritten musical notation on ten staves. The notation includes various notes, rests, and accidentals (sharps, flats, and naturals). The first staff contains three measures of music. The second staff contains two measures. The third staff contains five measures. The fourth staff contains three measures. The fifth staff contains two measures. The sixth staff contains two measures. The seventh staff contains two measures. The eighth staff contains two measures. The ninth staff contains two measures. The tenth staff contains two measures. The notation is written in a simple, hand-drawn style.